

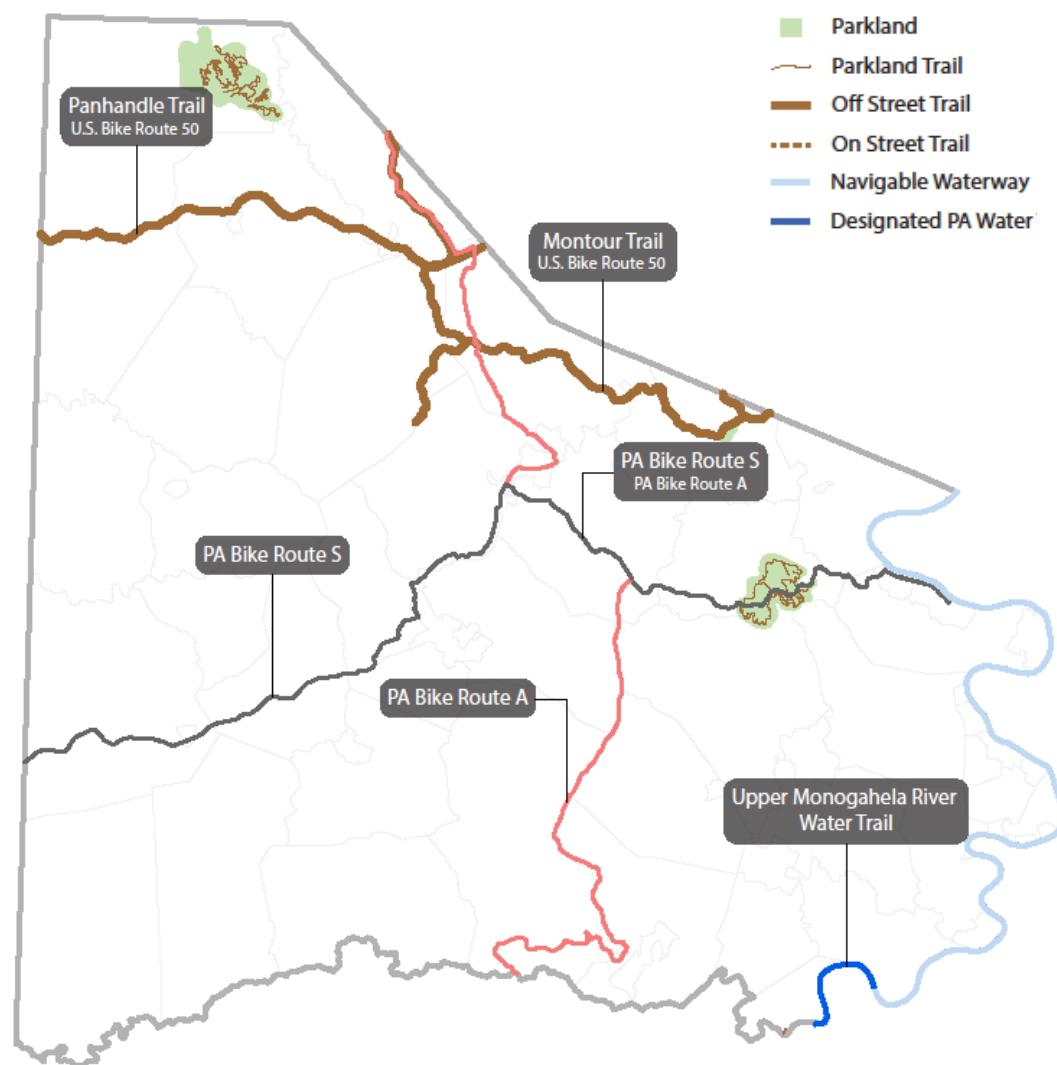


# Washington County Active Transportation Profile

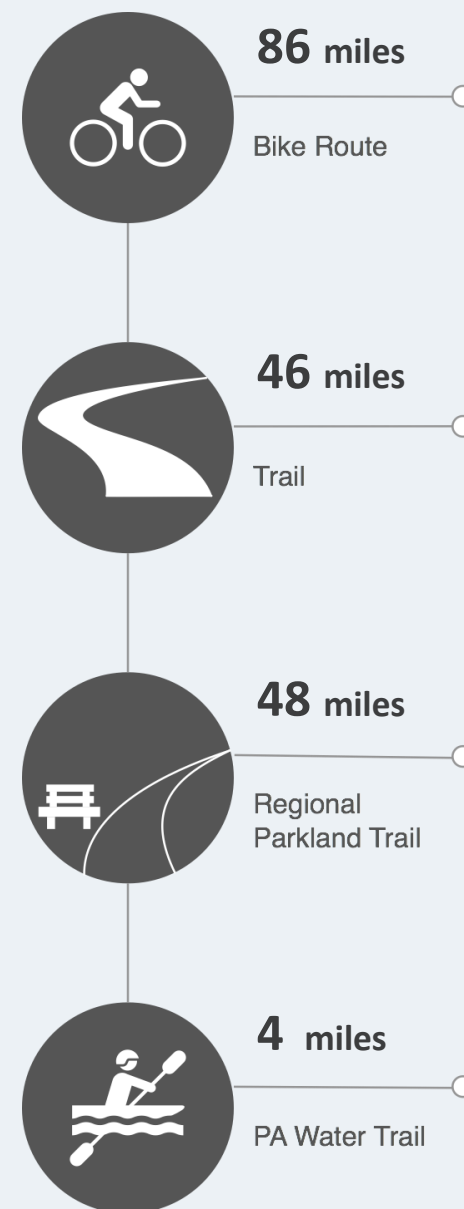
REGIONAL ACTIVE TRANSPORTATION PLAN FOR SOUTHWESTERN PENNSYLVANIA



## Trails + Bike Routes



**Other Water/Paddle Trail:** Navigable waterways that are not designated PA Water Trails also offer significant paddling opportunities and contribute to the health of a community. **Ten Mile Creek**, a tributary to the Monongahela, provides year-round opportunities for canoeing, fishing and kayaking. Ten Mile Creek Park, maintained by the county, includes a boat ramp with docks and a picnic area with shelters and restrooms.



## Facility Metrics

Facilities	2017
Miles of sidewalk (inventoried)	0
Miles of local on-road bike route	0
Miles of PA Bike Route A + S	85.7
Miles of U.S. Bike Route 50 (off-road trail)	33.6
Miles of protected bike lanes	0
Miles of bike lanes	0
Miles of sharrows	0
Miles of trail	94.4
<i>Miles of rail-trail or separated paths</i>	<i>46.3</i>
<i>Miles of trail in regional parks &amp; recreation areas</i>	<i>48.1</i>
Miles of navigable waterway	122.9
<i>Miles of designated PA Water Trails</i>	<i>4.4</i>

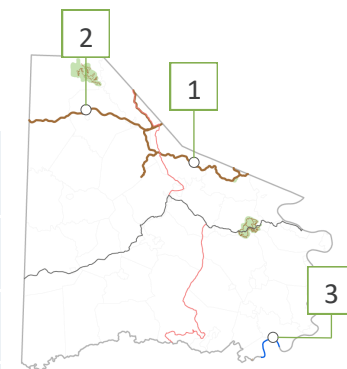
## Support Facilities

Support Facilities	2017
Bike Facilities	2
<i>Bike racks (inventoried)</i>	<i>2</i>
<i>Bike repair stations</i>	<i>0</i>
Trail parking and/or access points	48
Boat launches (source: PA Fish & Boat Commission)	15
<i>State/Federal (PFBC, State Parks, PGC or COE)</i>	<i>5</i>
<i>Local government</i>	<i>5</i>
<i>Private ownership</i>	<i>5</i>

Source: SPC GIS; inventories as of 12/31/17 unless otherwise noted

## Land + PA Water Trail Highlights

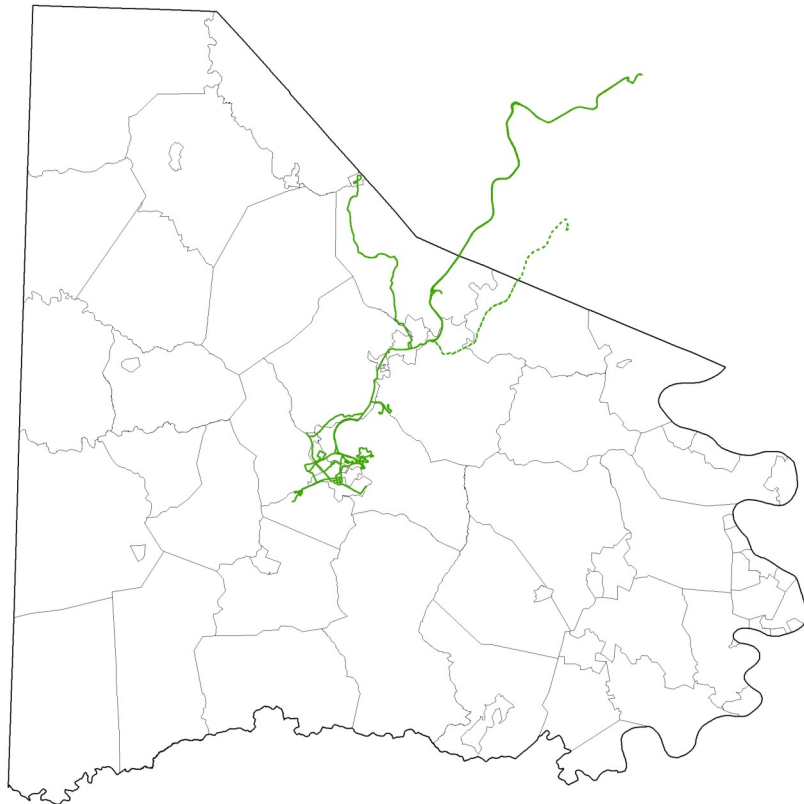
Trail	Functional Classification	Total Miles	Miles in County
1. Montour Trail (U.S. Bike Route 50, part)	Regional Arterial	62.8	29.1
2. Panhandle Trail (U.S. Bike Route 50)	Community Arterial	29	17.2
3. Upper Monongahela River Water Trail	Regional Arterial	60.6	4.4



## Trail Organizations

Organization	County Focus
Collier Friends of the Panhandle Trail	Panhandle Trail
Mon River Towns	Upper Mon and Ten Mile Creek
Montour Trail Council	Montour Trail
Airport Area Friends	Trail miles 0.0 to 12.6 and the 6.3 mile Airport Connector
Fort Cherry Friends of the Trail	Trail miles 12.3–20.7
Cecil Friends of the Trail	Trail miles 20.7–28.5
Peters Friends of the Trail	Trail miles 28.5–30.5
Peter's Township	Arrowhead Trail (trail miles 30.5–33.7) & Bethel Branch (trail miles 2.8–3.3)
Bethel Friends of the Trail	Trail Miles 34.9–35.3 and Bethel Branch (trail miles 0.0–2.1)
South Hills Friends of the Trail	Trail miles 35.3–46.3

## County Transit



### Fixed Transit Routes

Regular Service — (5 or more days / week)

Occasional Service - - - (Less than 5 days / week)

### Washington County Transportation Authority

System Type	Urban
Total Passengers	94,095
Senior Passengers	18,164
Current Fleet Size (motor bus)	12
Buses Equipped with Bike Racks	12

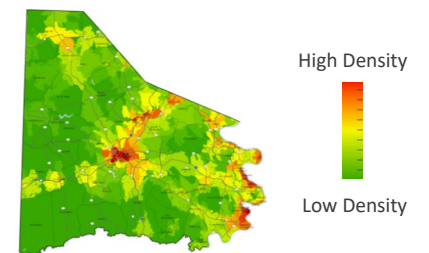
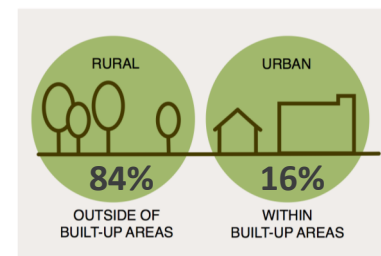
### Community Transportation

Total Shared-Ride Trips	79,978
65 + Trips	30,895

Source: Pennsylvania Public Transportation Performance Report – Fiscal Year 2015-16

## County Character

### Land Use Development Patterns



## Projects

## Infrastructure Projects



## Non-Infrastructure Projects

Donora Borough: A Commonwealth Financing Authority (CFA) grant of \$50,000 was awarded to Donora Borough in fall 2017 for a **feasibility study** for the proposed 53-mile Mon Valley Steel Heritage Trail.



## PA 18 City of Washington Signal Upgrades

This project, which includes the replacement of three existing traffic signals and the installation of two new signals, will include enhanced pedestrian features and ADA sidewalk ramps.

Accessibility

## Valleybrook Road and Bebout Road Intersection Improvements

PennDOT is currently considering the possibility of a roundabout at this intersection. The close proximity of the Montour Trail, including a key trailhead, will be an important consideration as PennDOT collaborates with Peters Township and the Montour Trail Council on this project.

Connectivity

## Bicycle/Pedestrian Counts + Trends

## Panhandle Trail

Source: SPC

## COUNTS

6,970

Visitors

September 2016



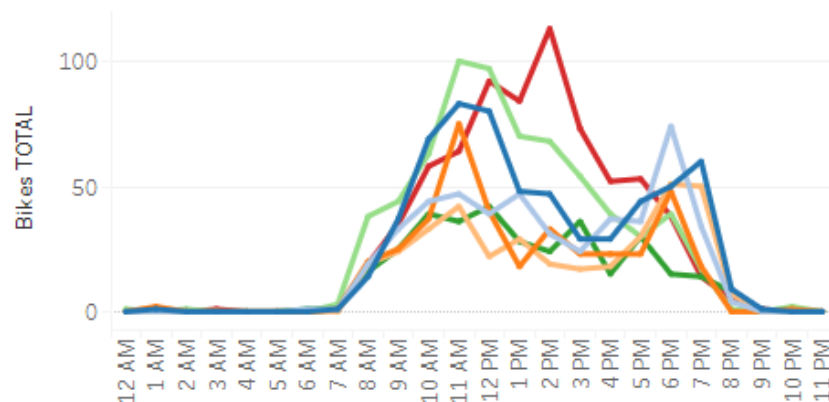
Daily Average: 199

Busiest Day of the Week: Sunday



## Hourly Usage by Day of Week for Total Bikes

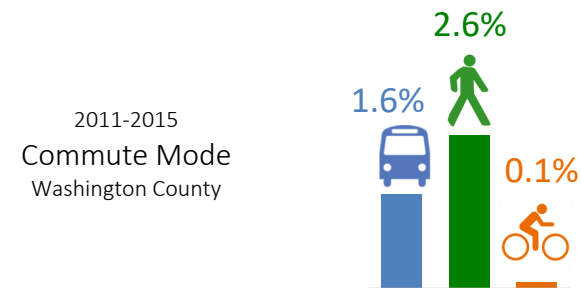
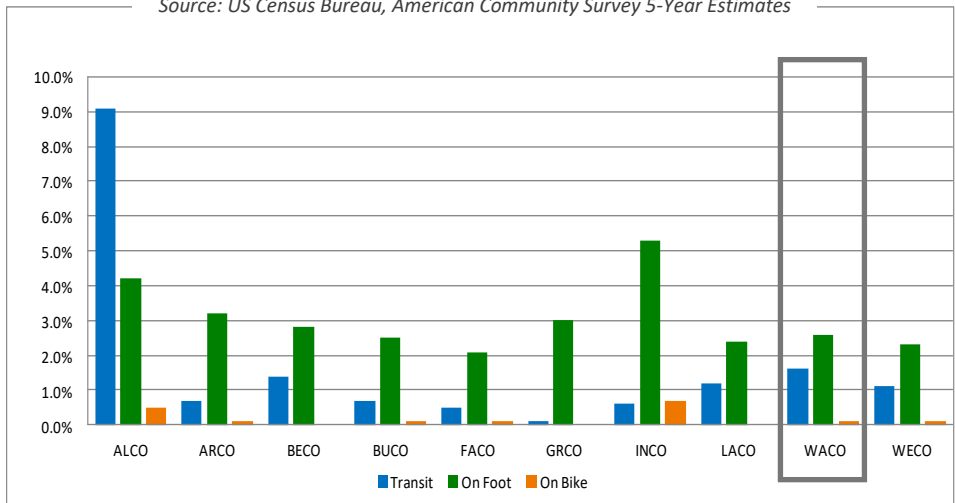
## TRENDS



## Census Commute Mode Data

## Census Commute Mode Comparison for SPC Counties: 2011-2015

Source: US Census Bureau, American Community Survey 5-Year Estimates



## Washington County, PA: 2006-2010

Means of Transportation to Work	2006-2010	2011-2015
<b>Total Commuters</b>	<b>93,545</b>	<b>93,519</b>
On bike	0.1%	0.1%
On foot	3.2%	2.6%
By transit	1.4%	1.6%

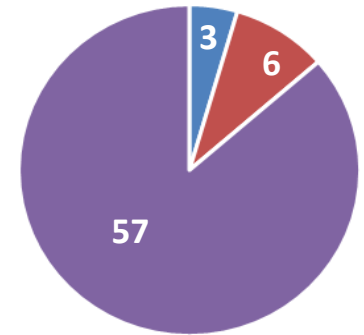
## County Planning + Land Use Controls

County Plans & Land Use Controls	Document Title	Active Transportation
<b>PLANS</b>		
Comprehensive Plan	Washington County Comprehensive Plan (2005)	✓
Open Space, Greenways & Trails Plan	Washington County Greenways Plan (2007)	✓
Bicycle/Pedestrian or AT Plan		
Other Plans or Studies related to AT	Washington County Parks and Recreations Master Plan Report (2014)	✓
<b>LAND USE CONTROLS</b>		
Subdivision and/or Land Development Ordinance (SALDO)		
Zoning Ordinance		
Official Map		

## Municipal Planning + Land Use Controls

Of Washington County's 66 municipalities, the following number of municipalities have:

- No Comprehensive Plan—No Land Use Controls
- No Comprehensive Plan—Land Use Control
- Comprehensive Plan—No Land Use Controls
- Comprehensive Plan—Land Use Controls



## Municipal Planning for Biking + Walking

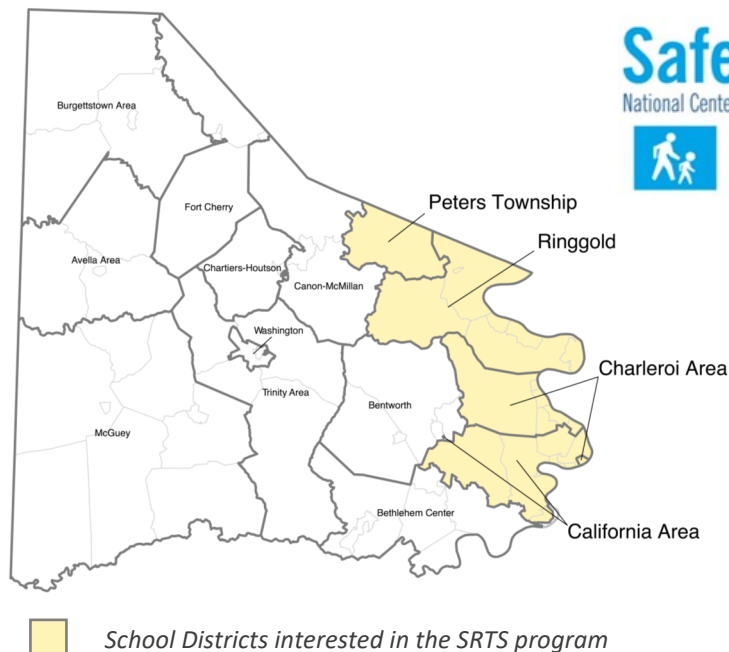
- Peters Township Comprehensive Recreation, Park, and Open Space Plan (2016)
- Chartiers Township Park and Recreation Plan (2016)
- City of Washington and East Washington Borough, Multi-Municipal Comprehensive Parks and Recreation Plan (2013)



## Current Programs, Policies + Designations

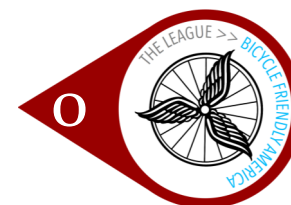
### Safe Routes to Schools

In spring 2017, SPC administered a Safe Routes to School (SRTS) Program survey to identify the level of participation and/or interest in the SRTS program. Based on the responses that were received:

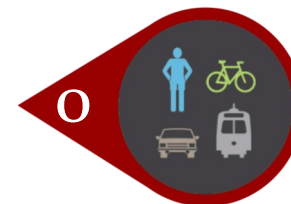


**0 School Districts** currently participate in a Safe Routes to School (SRTS) program.

**4 School Districts** are interested in learning more about funding opportunities for creating a Safe Routes to School (SRTS) program: California Area, Charleroi Area, Peters Township and Ringgold.



Bicycle Friendly Communities



Complete Streets Policy



Trail Towns



River Towns

- Fredericktown
- California
- Monongahela
- Charleroi



Walk Friendly Communities



WalkWorks