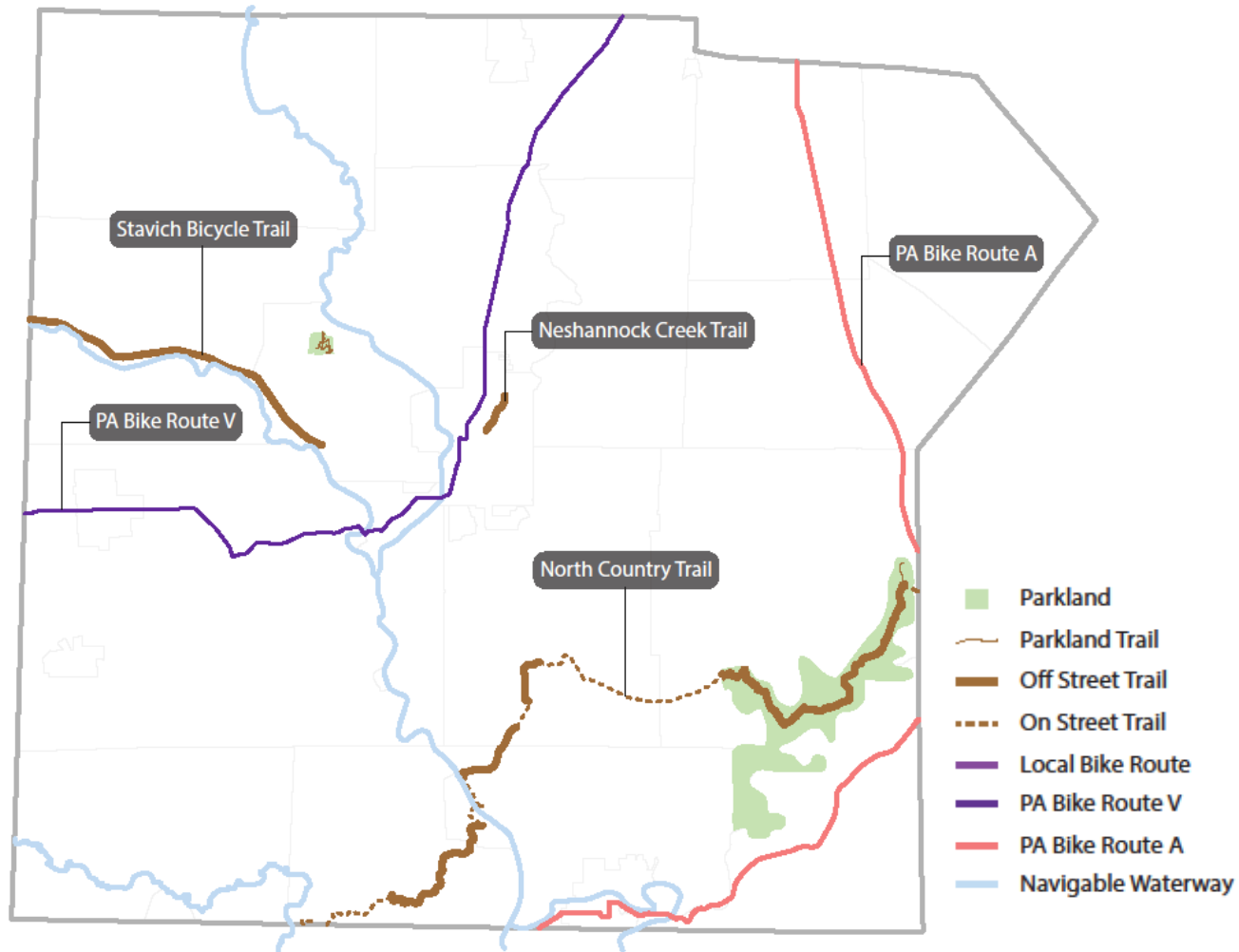




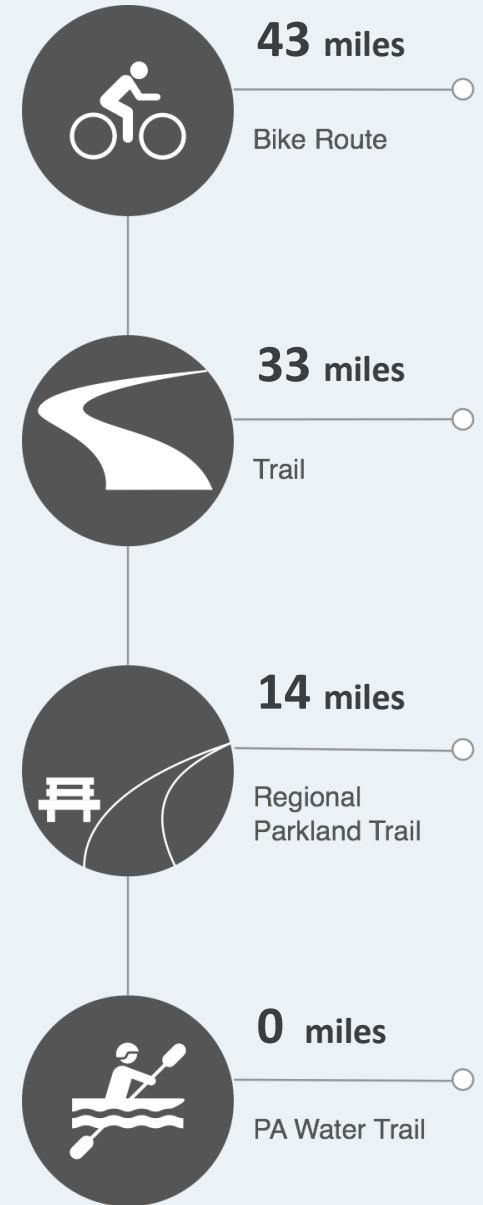
Lawrence County Active Transportation Profile

REGIONAL ACTIVE TRANSPORTATION PLAN FOR SOUTHWESTERN PENNSYLVANIA

Trails + Bike Routes



Navigable waterways offer significant paddling opportunities and contribute to the health of a community. In Lawrence County, navigable waterways with public launches include the Beaver River, the Shenango River, Connoquenessing Creek, Neshannock Creek and Slippery Rock Creek.



Facility Metrics

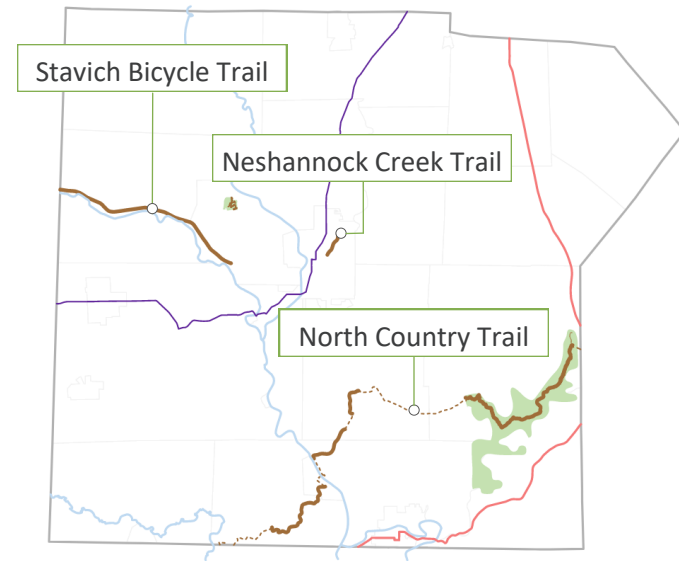
Facilities 2017

Miles of sidewalk (inventoried)	0
Miles of local on-road bike route or facility	0
Miles of PA Bike Route A + V	42.8
Miles of protected bike lanes	0
Miles of bike lanes	0
Miles of sharrows	0.29
Miles of trail	37.4
<i>Miles of rail-trail or separated paths</i>	33
<i>Miles of trail in regional parks & recreation areas</i>	13.8
Miles of navigable waterway	73.4
<i>Miles of designated PA Water Trails</i>	0

Support Facilities 2017

Bike Facilities	0
<i>Bike racks (inventoried)</i>	0
<i>Bike repair stations</i>	0
Trail parking and/or access points	23
Boat launches (source: PA Fish & Boat Commission (4) + Lawrence County (12))	16
<i>State/Federal (PFBC, State Parks, PGC or COE)</i>	3
<i>Local government</i>	1
<i>Private ownership</i>	0

Source: SPC GIS; inventoried as of 12/31/17 unless otherwise noted



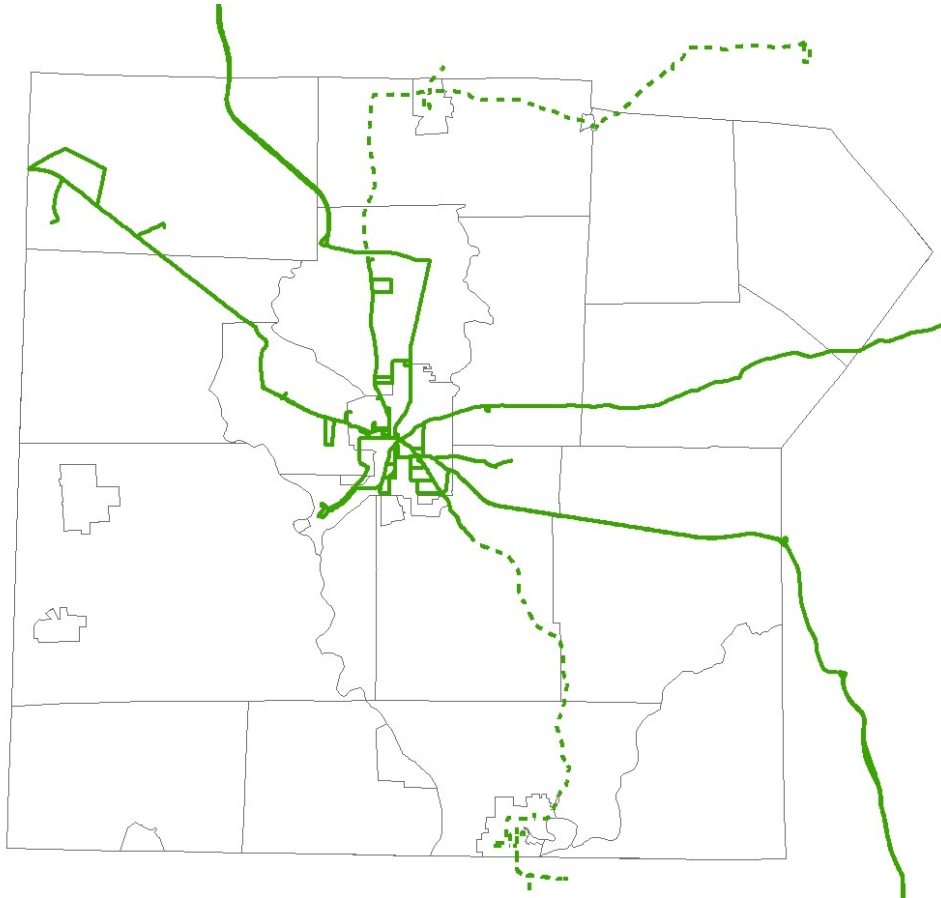
Trail Highlights

Trail	Functional Classification	Total Miles	Miles in County
Neshannock Creek Trail	Local	0.8	0.8
North Country Trail	Regional Arterial	4,600	25.1
Stavich Bicycle Trail	Community Collector	12	7.1

Trail Organizations

Organization	County Focus
North Country Trail Association Wampum Chapter	North Country Trail

County Transit



Fixed Transit Routes

Regular Service
(5 or more days / week)

Occasional Service
(Less than 5 days / week)

New Castle Area Transit Authority

System Type	Rural
Total Passengers	572,381
Senior Passengers	82,345
Current Fleet Size (motor bus)	34
Buses Equipped with Bike Racks	34

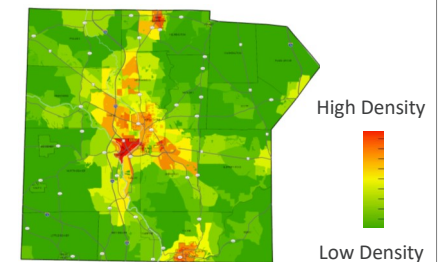
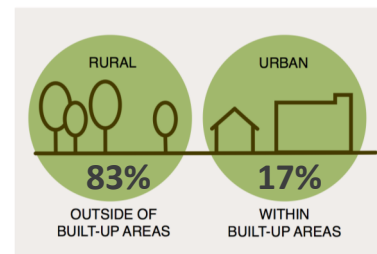
Allied Coordinated Transportation Services, Inc. (ACTS)

System Type	Community Transportation
Total Shared-Ride Trips	76,487
65 + Trips	27,526

Pennsylvania Public Transportation Performance Report – Fiscal Year 2015-16

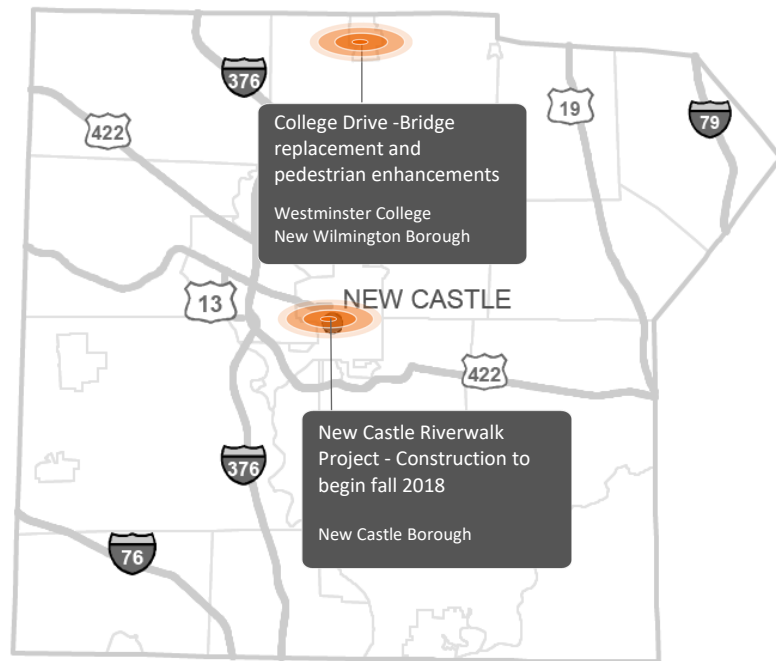
County Character

Land Use Development Patterns



Projects

Infrastructure Projects



Non-Infrastructure Projects

Bike Suitability Maps

Lawrence County worked with SPC to obtain GIS bike suitability layers, which they are using to develop county bike suitability maps.

Route 65/422 Corridor Study

The goal of this study, which will be conducted in 2018, will be to identify potential multimodal transportation improvements to the highway that leads from Shenango Township into Ellwood City. The study will be conducted in 2018.

PennDOT Connects

**SR 488 Portersville Road Bridge over Slippery Rock Creek**

PennDOT is partnering with the Pennsylvania Fish and Boat Commission to improve access to a canoe/kayak launch as part of this bridge project in Perry Township. This site is also the location for an annual community trout fishing derby for kids.

Accessibility

Mountville Bridge over Slippery Rock Creek

As part of this bridge rehabilitation in Slippery Rock and Perry Townships, PennDOT partnered with the Department of Conservation and Natural Resources and the Three Rivers Paddling Club to provide a temporary boat launch area in order to accommodate an annual kayaking clinic during construction.

Accessibility

PA 168 Gailee Road to Moravia Street

In addition to pavement patching, signage, drainage and other roadway elements, this highway reconstruction project in North Beaver and Taylor Townships will include sidewalk improvements for better pedestrian mobility.

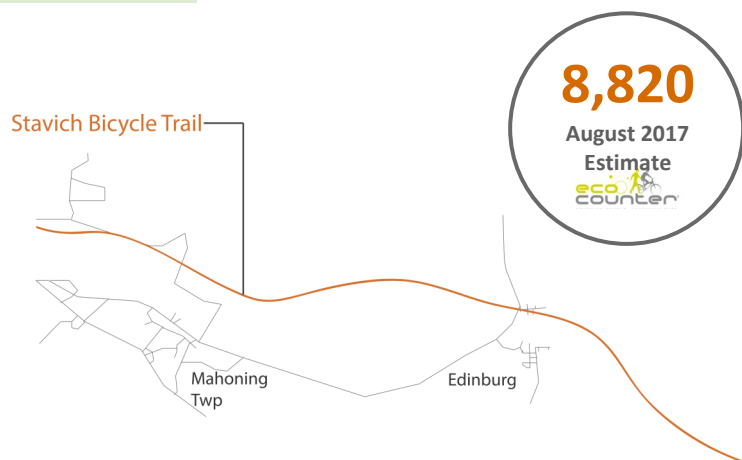
Connectivity

Bicycle/Pedestrian Counts + Trends

Stavich Bicycle Trail

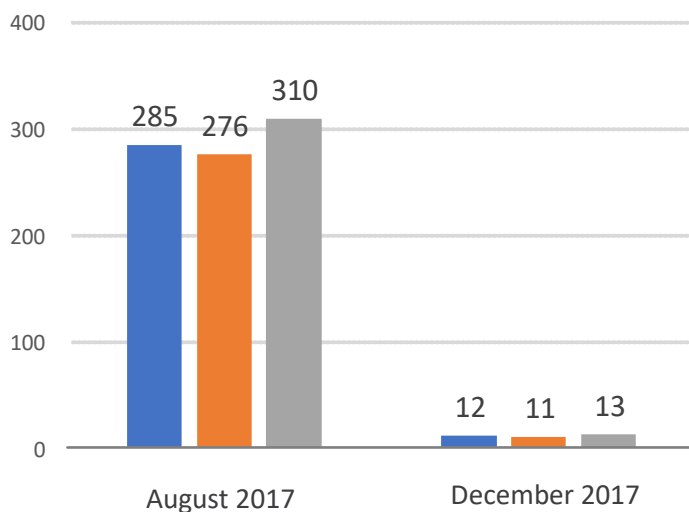
Source: Lawrence County

COUNTS



■ Daily Average ■ Weekdays ■ Weekends

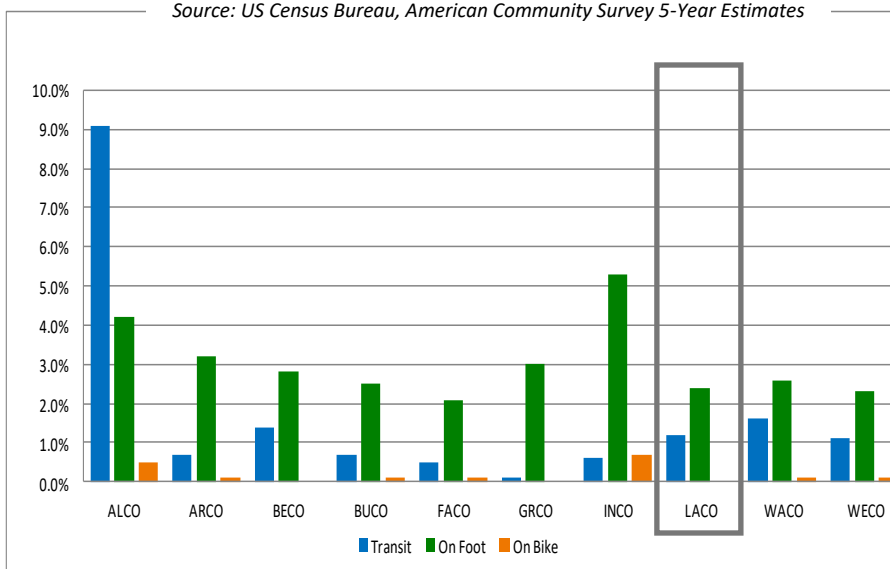
TRENDS



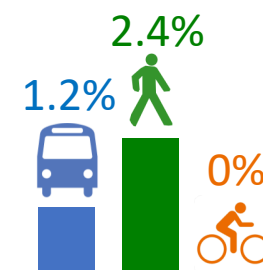
Census Commute Mode Data

Census Commute Mode Comparison for SPC Counties: 2011-2015

Source: US Census Bureau, American Community Survey 5-Year Estimates



2011-2015
Commute Mode
Lawrence County



Lawrence County, PA: 2006-2010 & 2011-2015

Means of Transportation to Work	2006-2010	2011-2015
Total Commuters	39,496	37,318
On bike	0.3%	0%
On foot	3.7%	2.4%
By transit	0.9%	1.2%

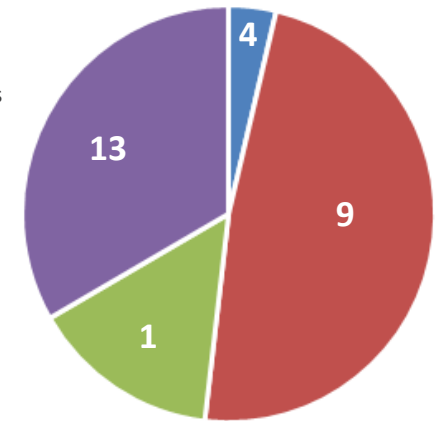
County Planning + Land Use Controls

County Plans & Land Use Controls	Document Title	Active Transportation
PLANS		
Comprehensive Plan	Lawrence County Comprehensive Plan Update: Focus Lawrence County (2016)	✓
Open Space, Greenways & Trails Plan	Lawrence County Greenways Plan Update: Experience Lawrence County (2017)	✓
Bicycle/Pedestrian or AT Plan		
Other Plans or Studies related to AT	Multimodal Corridor Study, Northern Lawrence County (underway)	✓
LAND USE CONTROLS		
Subdivision and/or Land Development Ordinance (SALDO)	Subdivision and Land Development Ordinance for Lawrence County (1991)	✓
Zoning Ordinance		
Official Map		

Municipal Planning + Land Use Controls

Of Lawrence County's 27 municipalities, the following number of municipalities have:

- No Comprehensive Plan—No Land Use Controls
- No Comprehensive Plan—Land Use Control
- Comprehensive Plan—No Land Use Controls
- Comprehensive Plan—Land Use Controls



Municipal Planning for Biking + Walking

City of New Castle: New Castle Riverwalk Project Study

In 2014, the City of New Castle created a Riverwalk plan that recommended a connection from the proposed Neshannock Trail to the city's Riverwalk Park. Lawrence County has applied for funding to improve the connection from Riverwalk Park across the North Street Bridge to the New Castle Transit Station, to the trailhead of the newly-constructed Neshannock Trail. The final design is still in the finishing stages. The project is anticipated to be completed in 2018.

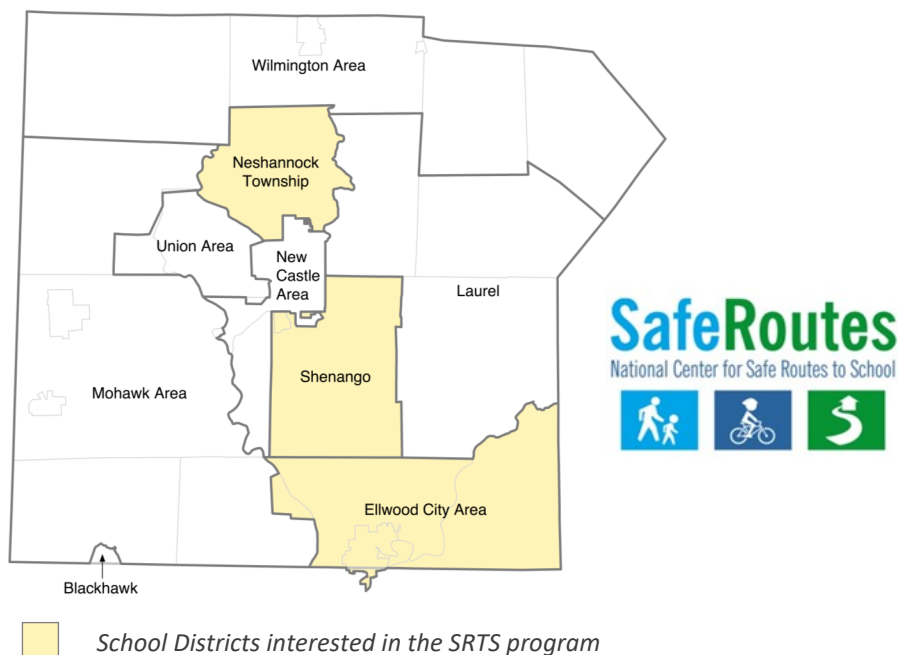
Ellwood City: Bicycle Network

Ellwood City has developed a bike network for the city and completed Phase I, which involved placing sharrows on identified bike routes. Future plans include installation of signage and bike boxes.

Current Programs, Policies + Designations

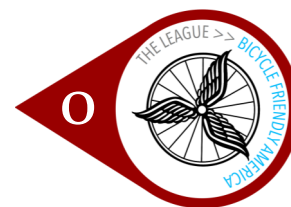
Safe Routes to Schools

In spring 2017, SPC administered a Safe Routes to School (SRTS) Program survey to identify the level of participation and/or interest in the SRTS program. Based on the responses that were received:

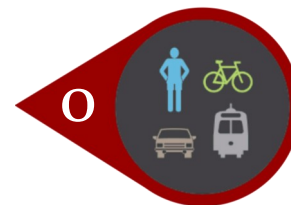


0 School Districts currently participate in a Safe Routes to School (SRTS) program.

3 School Districts are interested in learning more about funding opportunities for creating a Safe Routes to School (SRTS) program: Ellwood City Area, Neshannock Township and Shenango Area.



Bicycle Friendly Communities



Complete Streets Policy



Trail Towns

- Wampum



River Towns



Walk Friendly Communities



WalkWorks