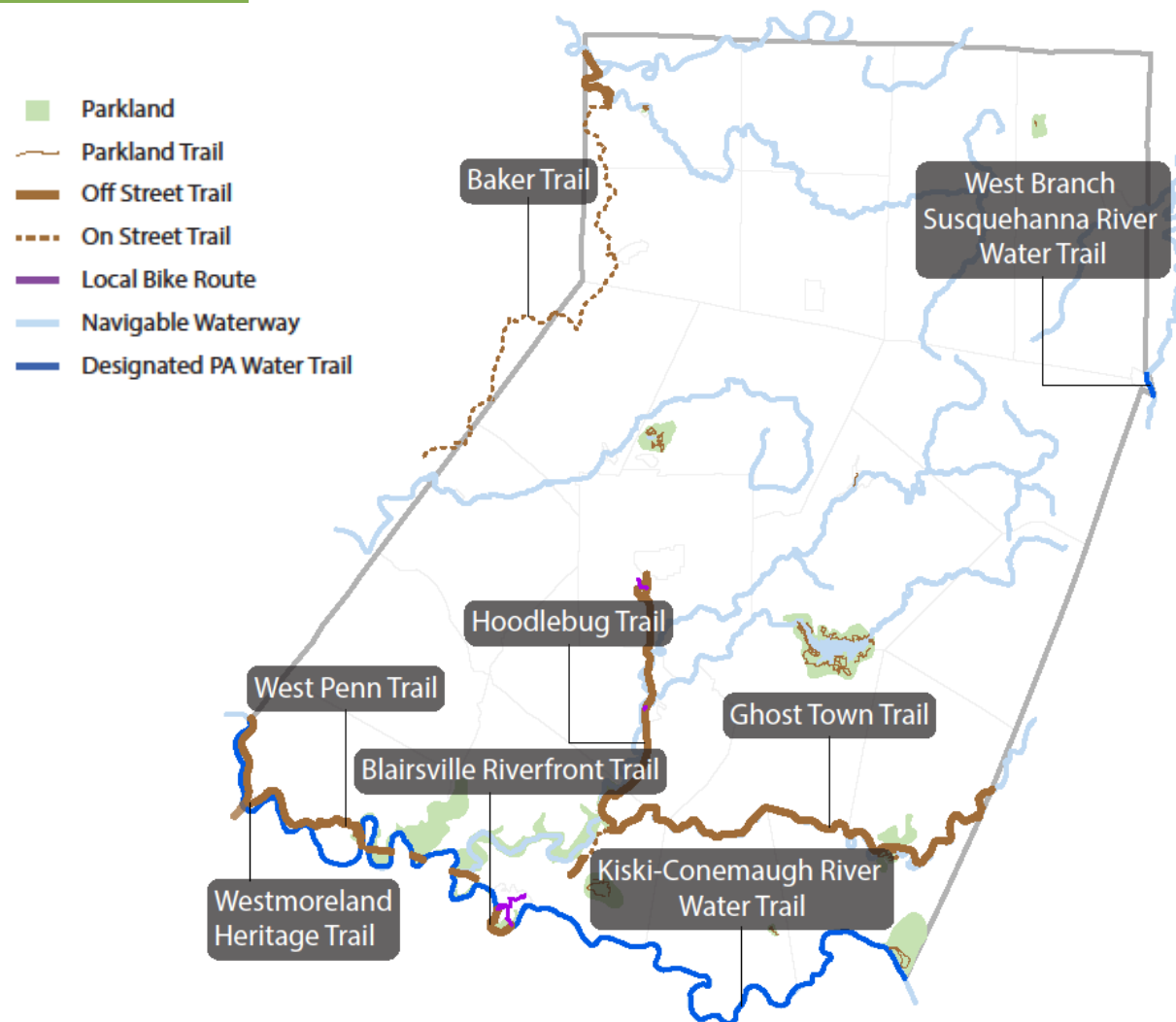




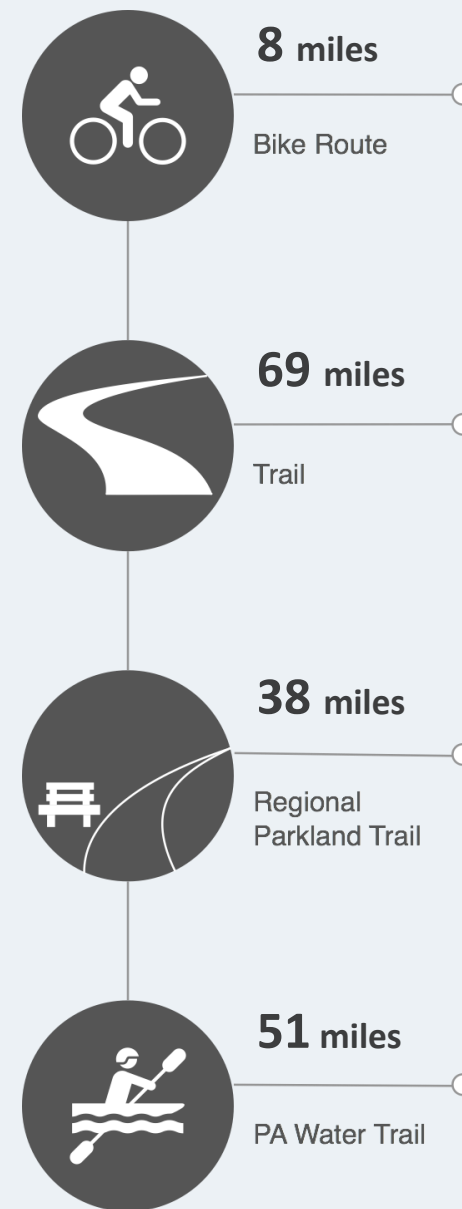
Indiana County Active Transportation Profile

REGIONAL ACTIVE TRANSPORTATION PLAN FOR SOUTHWESTERN PENNSYLVANIA

Trails + Bike Routes



Other Water/Paddle Trail: Navigable waterways that are not designated PA Water Trails also offer significant paddling opportunities and contribute to the health of a community. The county's **Waterworks Conservation Area** includes a canoe/kayak launch that provides access to paddling 8-miles of Two Lick Creek.



Facility Metrics

Facilities 2017

Miles of sidewalk (inventoried)	0
Miles of local on-road bike route or facility	6.9
Miles of protected bike lanes	0
Miles of bike lanes	1.25
Miles of sharrows	0
Miles of trail	106.6
<i>Miles of rail-trail or separated paths</i>	68.6
<i>Miles of trail in regional parks & recreation areas</i>	38
Miles of navigable waterway	341.9
<i>Miles of designated PA Water Trails</i>	50.6

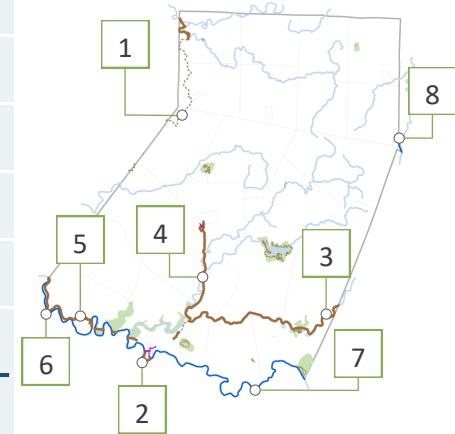
Support Facilities 2017

Bike facilities	0
<i>Bike racks (inventoried)</i>	0
<i>Bike repair stations</i>	0
Trail parking and/or access points	51
Boat launches (source: PA Fish & Boat Commission + SPC)	10
<i>State/Federal (PFBC, State Parks, PGC or COE)</i>	8
<i>Local government</i>	2
<i>Private ownership</i>	0

Source: SPC GIS; inventoried as of 12/31/17 unless otherwise noted

Land + PA Water Trail Highlights

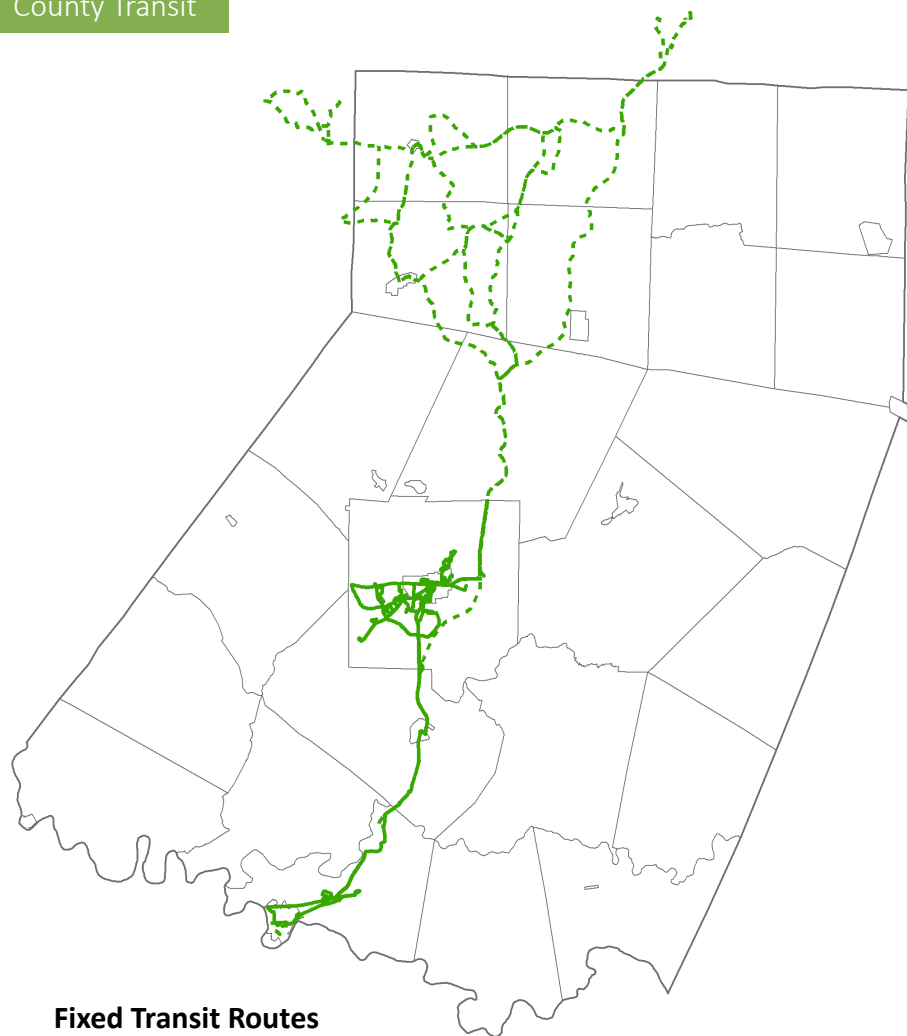
Trail	Functional Classification	Total Miles	Miles in County
1. Baker Trail	Regional Arterial	132	18.3
2. Blairsville Riverfront Trail	Local	1.8	1.8
3. Ghost Town Trail	Community Arterial	36	20.1
4. Hoodlebug Trail	Community Collector	14.9	14.9
5. West Penn Trail	Community Collector	17.5	13.3
6. Westmoreland Heritage Trail	Community Collector	14.6	.2
7. Kiski-Conemaugh River Water Trail	Regional Arterial	86	49.7
8. West Branch Susquehanna River Water Trail	Regional Arterial	228	.9



Trail Organizations

Organization	County Focus
Allegheny Ridge Corporation	Kiski-Conemaugh River Water Trail
Cambria & Indiana Trail Council (C & I Trail Council)	Ghost Town Trail, Hoodlebug Trail
Conemaugh Valley Conservancy	West Penn Trail
Indiana County Parks & Trails	Ghost Town Trail, Hoodlebug Trail, Blairsville Riverfront Trail
Rachel Carson Conservancy	Baker Trail
Trans Allegheny Trails	Promoting and advocating for connecting trails within the Allegheny Mountains
Regional Trail Corporation Westmoreland Trail Chapter + Murrysville Trail Alliance	Westmoreland Heritage Trail
Susquehanna Greenway Partnership	West Branch Susquehanna River Water Trail

County Transit



Fixed Transit Routes

Regular Service — (5 or more days / week)

Occasional Service - - - (Less than 5 days / week)

Indiana County Transit Authority (IndiGO)

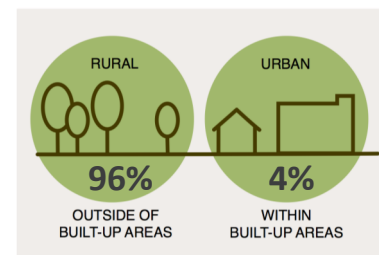
System Type	Rural
Total Passengers	351,410
Senior Passengers	11,913
Current Fleet Size (Motor Bus)	16
Buses Equipped with Bike Racks	12

Community Transportation

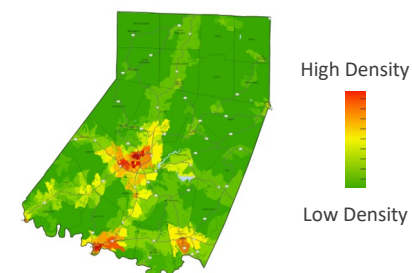
Total Shared-Ride Trips	22,502
65 + Trips	20,782

Source: Pennsylvania Public Transportation Performance Report – Fiscal Year 2015-16

County Character



Land Use Development Patterns



Infrastructure Projects

1

Indiana Multimodal Corridor Project

Phase I involves construction of a 2.7 mile biking and walking corridor from the current terminus of the Hoodlebug Trail, through campus to 8th Street and Gompers Avenue- planned for construction 2018.

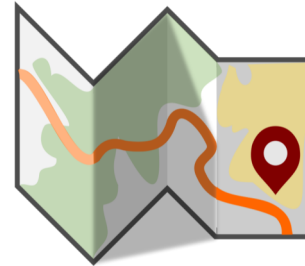
2

Route 22 Ped/Bike Bridge

Pedestrian bicycle bridge over US 22 at the US 22 / US 119 Interchange in Burrell Township.



Non-Infrastructure Projects



INDIANA BOROUGH'S BICYCLE AND PEDESTRIAN COMMITTEE IS PREPARING A WALKABILITY/BIKE MAP.

**PA 286: US 422 Interchange East**

This project is focused on intersection improvements, lane additions, and traffic signal optimization on PA 286 from Rustic Lodge Road to the US Route 422 Interchange in White Township.

Connectivity

This project will also include the construction of sidewalks to fill in missing gaps in the pedestrian infrastructure network.

Philadelphia Street Bridge Group

This project will replace two bridges over White's Run and Marsh Run on Philadelphia Street in Indiana Borough.

Accessibility

Philadelphia Street is Indiana's "Main Street." Maintaining pedestrian accessibility during and after construction has been a critical component of project development.

Bicycle/Pedestrian Counts + Trends

Ghost Town Trail



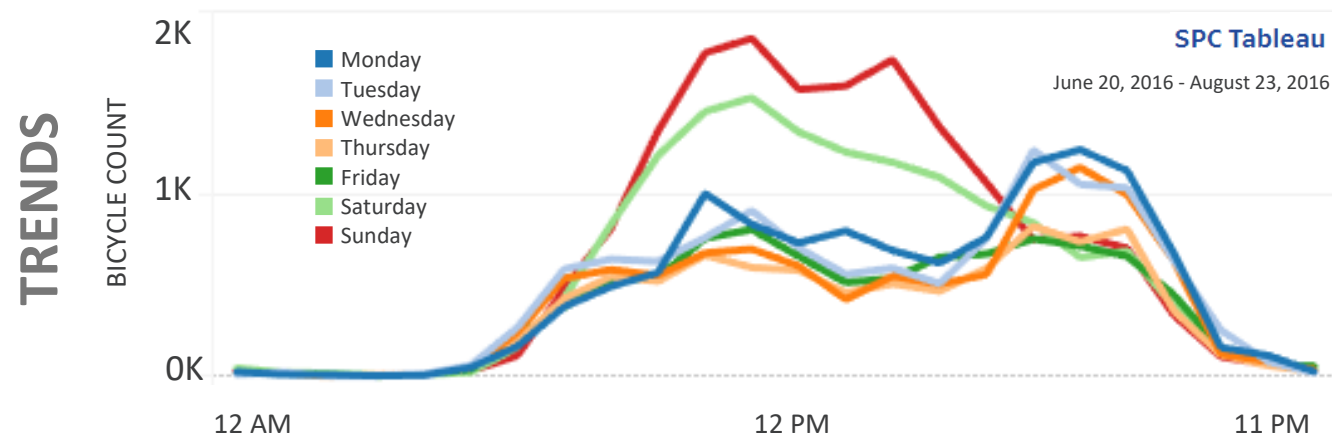
Hoodlebug Trail



Commuter & Weekday Use

In contrast, the Hoodlebug Trail attracts more commuter use and has greater weekday use.

HOURLY USAGE BY DAY OF WEEK



Source: SPC

Blairsville Riverfront Trail

3,194 TRIPS



Annual Estimate
2017

18,462 TRIPS

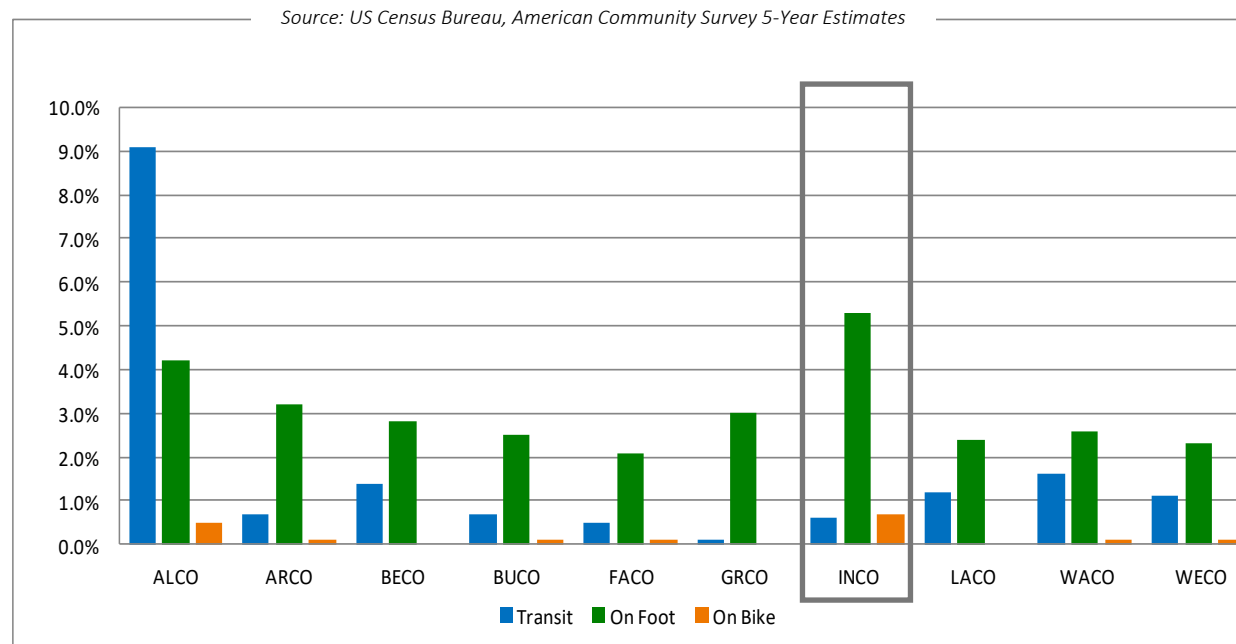


Annual Estimate
2017

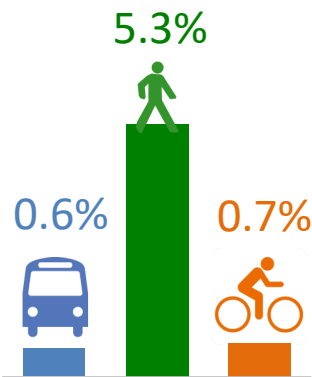
Source: SPC

Census Commute Mode Data

Census Commute Mode Comparison for SPC Counties: 2011-2015



2011-2015
Commute Mode
Indiana County



Indiana County, PA: 2006-2010 & 2011-2015

Means of Transportation to Work	2006-2010	2011-2015
Total Commuters	38,689	36,312
On bike	0.2%	0.7%
On foot	6.1%	5.3%
By transit	0.7%	0.6%

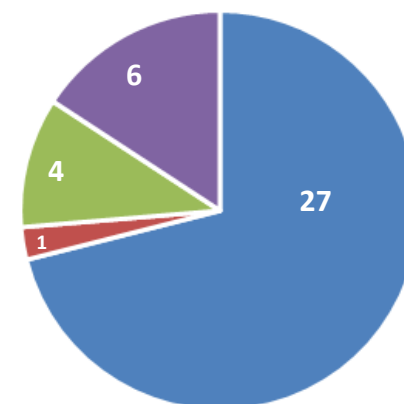
County Planning + Land Use Controls

County Plans & Land Use Controls	Document Title	Active Transportation
PLANS		
Comprehensive Plan	<i>Where We Live; A Comprehensive Plan for Indiana County, PA (2012)</i>	✓
Open Space, Greenways & Trails Plan	Indiana County Open Space, Greenways, and Trails Plan (2010)	✓
Bicycle/Pedestrian or AT Plan	More People Biking & Walking More Often (2010)	✓
Other Plans or Studies related to AT	Indiana County Regional Trail Connectivity Study	✓
LAND USE CONTROLS		
Subdivision and/or Land Development Ordinance (SALDO)	Indiana County Subdivision Ordinance	
Zoning Ordinance	Indiana County Special Recreation and Conservation Zoning Ordinance	
Official Map		

Municipal Planning + Land Use Controls

Of Indiana County's 38 municipalities, the following number of municipalities have:

- No Comprehensive Plan—No Land Use Controls
- No Comprehensive Plan—Land Use Control
- Comprehensive Plan—No Land Use Controls
- Comprehensive Plan—Land Use Controls



Municipal Planning for Biking + Walking

Indiana County Active Transportation Committee

Blairsville Borough: Blairsville Downtown Strategic Action Plan (2012)

Strategies include connecting the Blairsville Riverfront Trail to the regional trail network, fixing sidewalks and inviting bicyclists downtown through the use of sharrows and the provision of bike parking.

Clymer Borough: Think Clymer 2035 and Zoning Ordinance of Clymer Borough (2014)

Plan goals include creating links within the community through the development of trails and/or pathways that will provide safe access to the downtown area and recreation facilities.

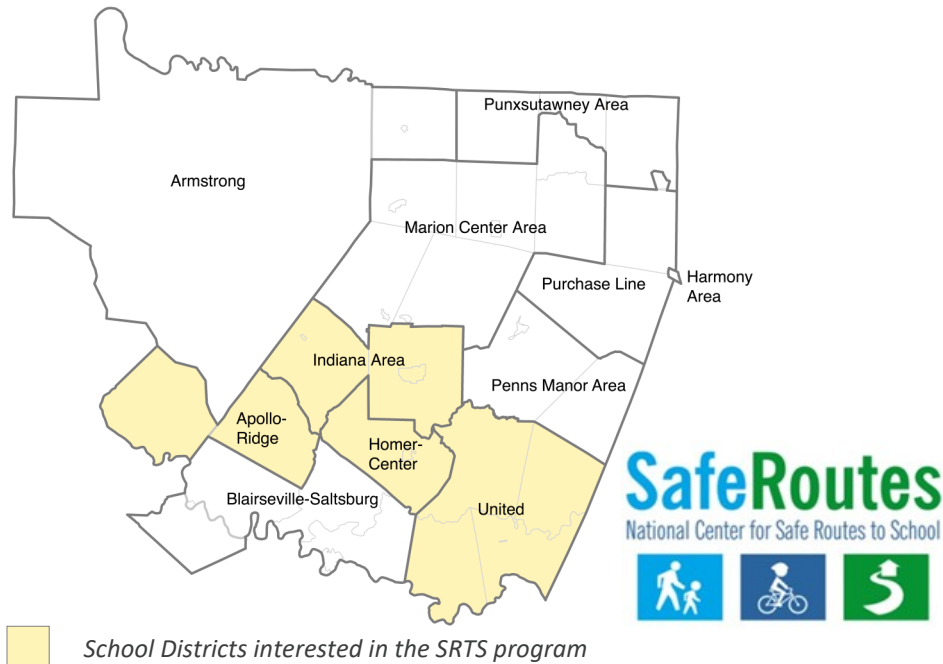
Indiana Borough and White Township: Multimodal Mobility Study (2003)

Recommendations include creating links within the community through the development of trails and/or pathways that will provide safe access to the downtown area and recreation facilities.

Current Programs, Policies + Designations

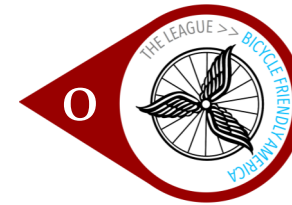
Safe Routes to Schools

In spring 2017, SPC administered a Safe Routes to School (SRTS) Program survey to identify the level of participation and/or interest in the SRTS program. Based on the responses that were received:

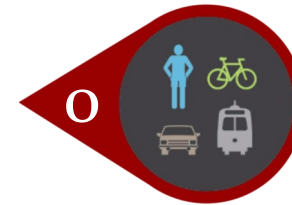


0 School Districts currently participate in a Safe Routes to School (SRTS) program.

4 School Districts are interested in learning more about funding opportunities for creating a Safe Routes to School (SRTS) program: Apollo Ridge, Homer-Center, Indiana Area, and United.



Bicycle Friendly Communities



Complete Streets Policy



Trail Towns

- Saltsburg

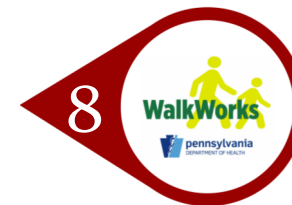


River Towns



Walk Friendly Communities

- Indiana Borough



WalkWorks

- Blairsville
- Ernest
- Glen Campbell
- Homer City
- Indiana Borough
- IRMC
- Penns Manor
- White Township