

Indiana County

Active Transportation Profile (2025)

Regional Active Transportation Plan for Southwestern Pennsylvania



This page intentionally left blank.

Trails + Bike Routes

By the Numbers

Trails

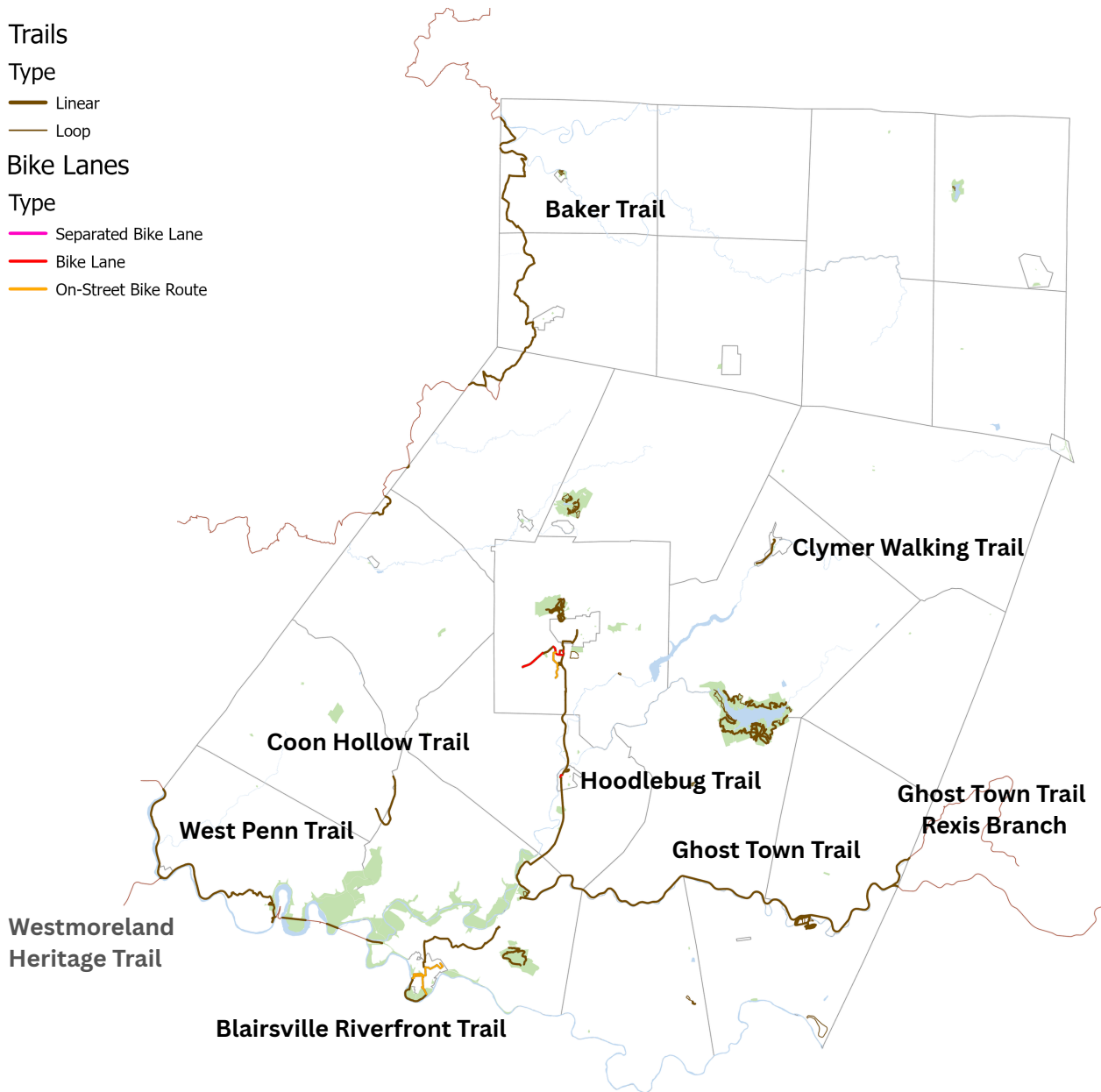
Type

- Linear
- Loop

Bike Lanes

Type

- Separated Bike Lane
- Bike Lane
- On-Street Bike Route



100 miles
Trail (linear)



17 miles
Trail (loop)



3.5 miles
Bike Lane



4 miles
On-Street
Bike Route



| Facilities | 2025 |
|--|--------------|
| Miles of sidewalk | 135.1 |
| Miles of bike lanes | 3.5 |
| <i>Miles of separated bike lanes</i> | 0.0 |
| <i>Miles of bike lanes</i> | 3.5 |
| Miles of local bike routes (does not include PA/US Bike Routes) | 4.3 |
| Miles of trail | 117.2 |
| <i>Miles of rail-trail or separated paths</i> | 99.9 |
| <i>Miles of trail in regional parks & recreation areas</i> | 17.2 |

| Support Facilities | 2025 |
|---------------------------------|------|
| Bike racks | 85 |
| Bike repair stations | 3 |
| Trail amenity (e.g., restrooms) | 11 |
| Trail access (with parking) | 92 |
| Trail access (no parking) | 21 |

All data inventoried and sourced by SPC as of 1/1/2026, unless otherwise indicated. Click on the links below to access SPC's online web apps.

[Regional Pedestrian Network](#)

[Regional Bicycle and Trail Network](#)

Trail Highlights

| Trails | Functional Classification | Miles in Region | Miles in County |
|------------------------------|---------------------------|-----------------|-----------------|
| Baker Trail | Regional Arterial | 76.3 | 18.2 |
| Blairsville Riverfront Trail | Local | 1.8 | 1.8 |
| Clymer Walking Trail | Local | 1.3 | 1.3 |
| Coon Hollow Trail | Local | 2.7 | 2.7 |
| Ghost Town Trail | Community Arterial | 20.1 | 20.1 |
| Hoodlebug Trail | Community Collector | 12.7 | 12.7 |
| West Penn Trail | Community Collector | 17.2 | 13 |

Trail Organizations

| Organization | County Focus |
|--|---|
| Cambria + Indiana Trail Council | Ghost Town Trail |
| Conemaugh Valley Conservancy | West Penn Trail |
| Indiana County Parks + Trails | Ghost Town, Hoodlebug and Blairsville Riverfront Trails |
| Rachel Carson Conservancy | Baker Trail |
| Regional Trail Corporation Westmoreland Trail Chapter + Murrysville Trail Alliance | Westmoreland Heritage Trail |

Multi-County and Multi-State Trail Networks

The **Trans Allegheny Trails** are a system of rail-trails in the Alleghenies. The system includes rail-trails that are located fully or partially within Indiana County. The Trans Allegheny Trails also form an eastern arm of the **Industrial Heartland Trails Coalition (IHTC) network** that will connect over 1,500 miles of trails in Western PA, New York, Ohio and West Virginia.

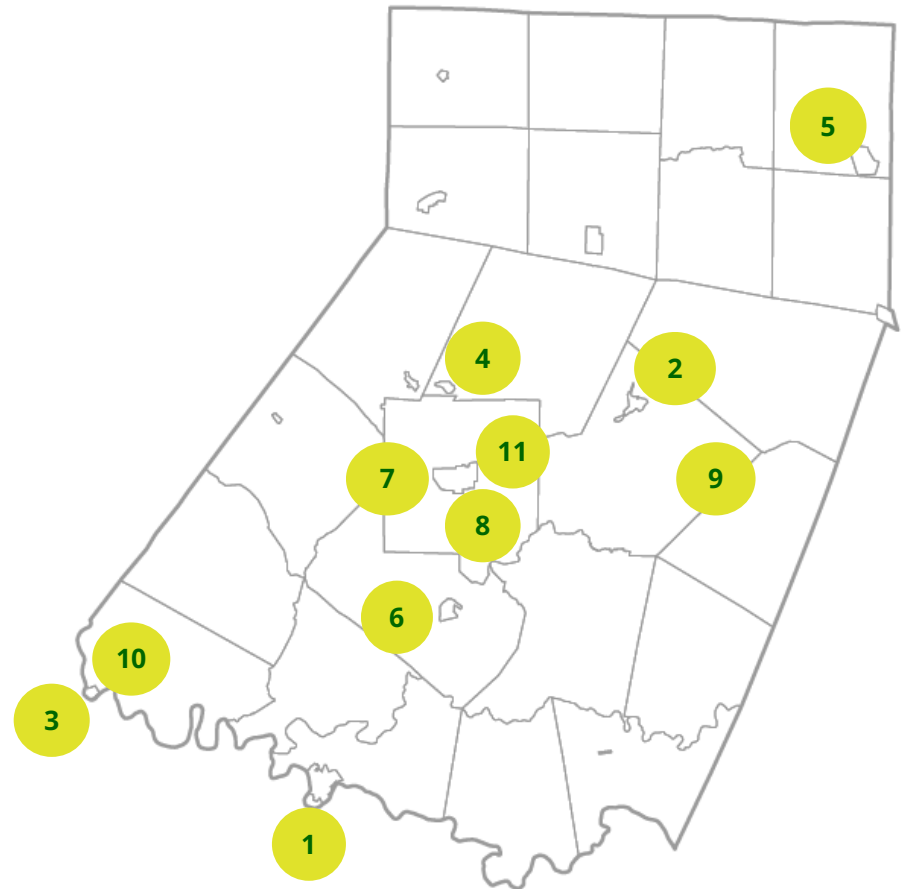
WalkWorks Routes

WalkWorks Routes

The following walking routes were created to promote physical activity and community engagement.



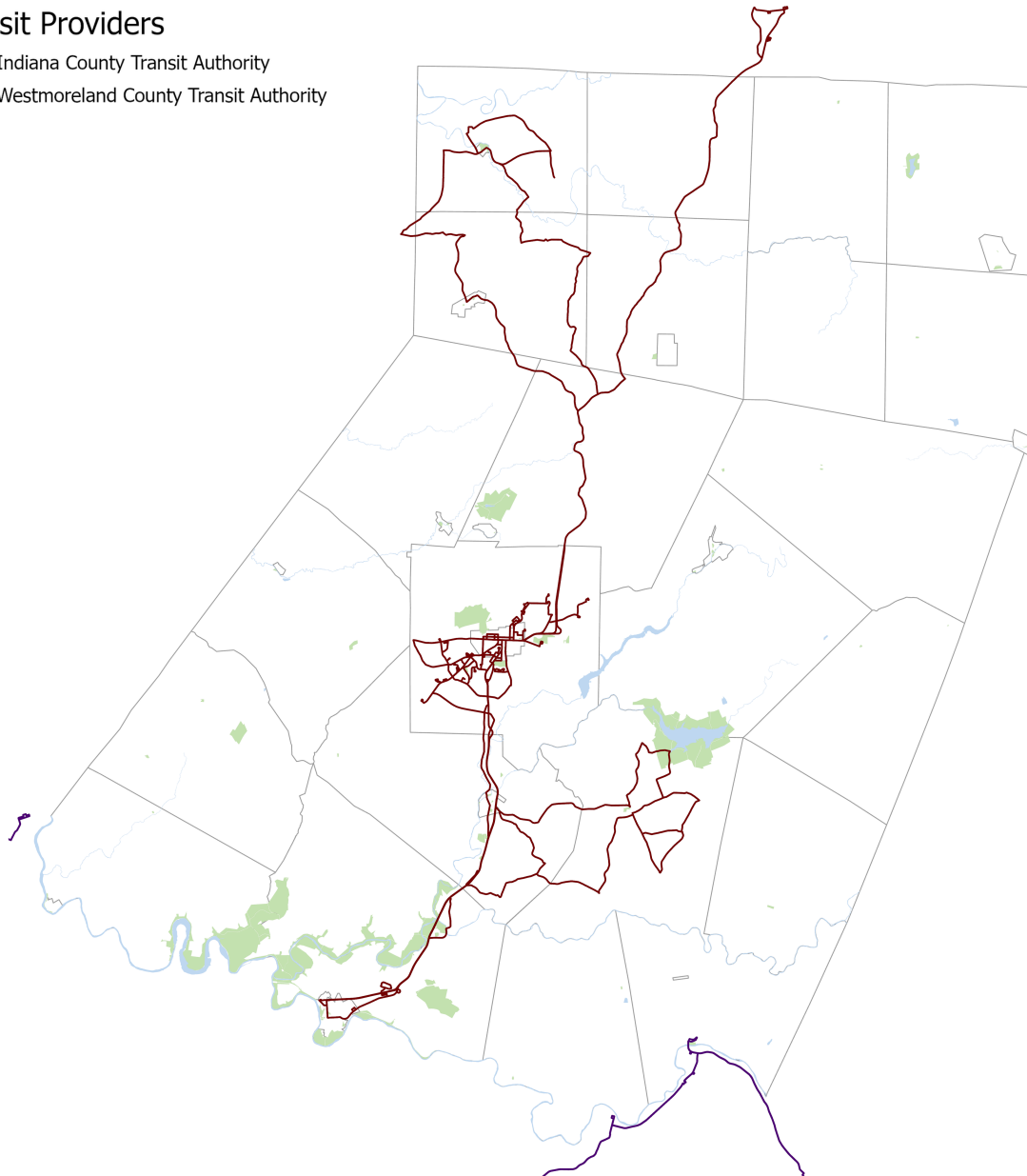
| | | |
|----|---|------------|
| 1 | Blairsville Route | 1 mile |
| 2 | Clymer Route | 1.48 miles |
| 3 | Downtown Saltsburg Route | 1.2 miles |
| 4 | Ernest Route | 1.5 miles |
| 5 | Glen Campbell Route | 1.5 miles |
| 6 | Homer City Route | 2 miles |
| 7 | Indiana Borough Route | 2.05 miles |
| 8 | Indiana Regional Medical Center Route | 1 mile |
| 9 | Penns Manor Route | 1.25 miles |
| 10 | Uptown Saltsburg Route | 1.2 miles |
| 11 | White Township Recreation Complex Route | 1.36 miles |



Transit Overview

Transit Providers

- Indiana County Transit Authority
- Westmoreland County Transit Authority



Indiana County Transit Authority (IndiGO)

| | |
|--------------------------------------|---------|
| System Type | Rural |
| Square Miles | 504 |
| Population | 56,692 |
| Total Passengers | 187,624 |
| Senior Passengers | 20,281 |
| Current Fleet Size | 28 |
| CNG Motor Bus | 16 |
| Diesel/Gasoline Paratransit Vehicles | 12 |

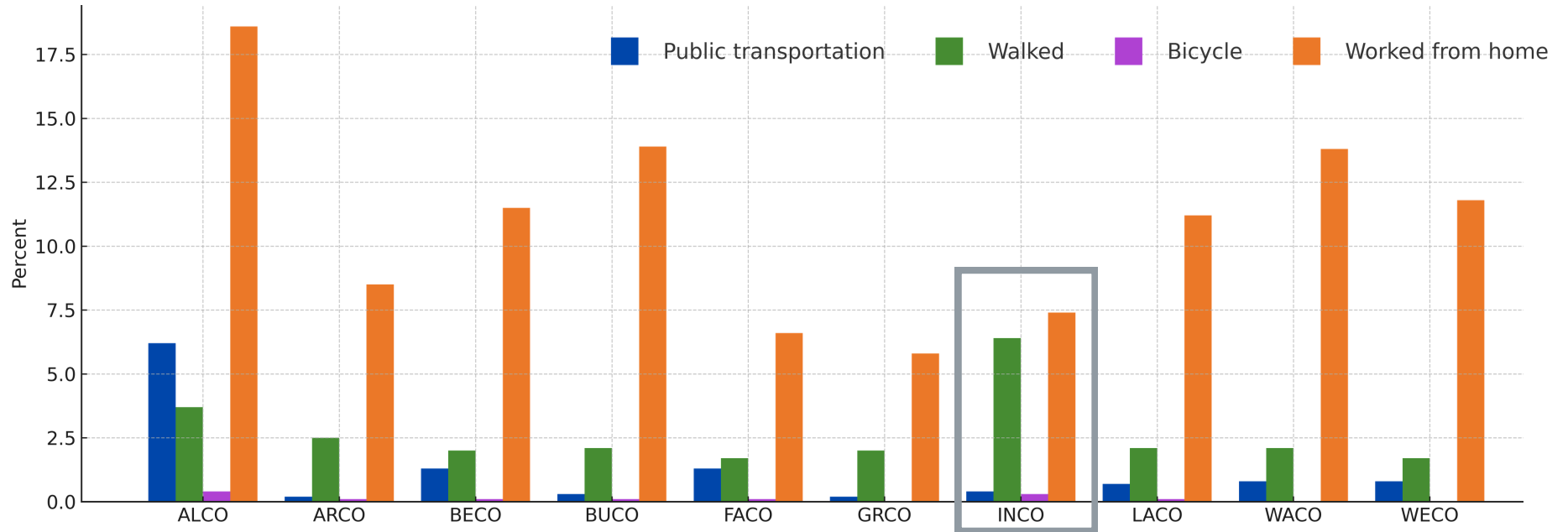
Community Transportation

| | |
|--------------------------------|--------|
| Total Shared-Ride Trips | 22,907 |
| <i>65 + Trips</i> | 14,753 |
| <i>PwD Trips</i> | 1,505 |
| <i>Other Shared-Ride Trips</i> | 6,649 |

Pennsylvania Public Transportation Annual Performance Report – Fiscal Year 2023-24

Commute Mode Share

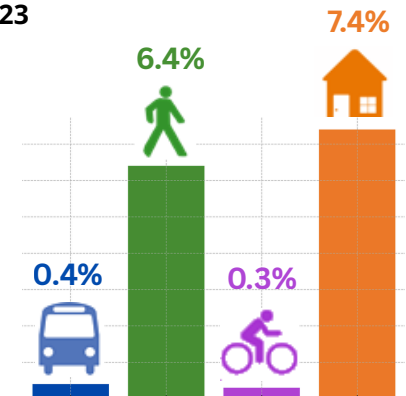
Commute Mode Comparison for SPC Counties
American Community Survey (ACS) 2019-2023



Indiana County

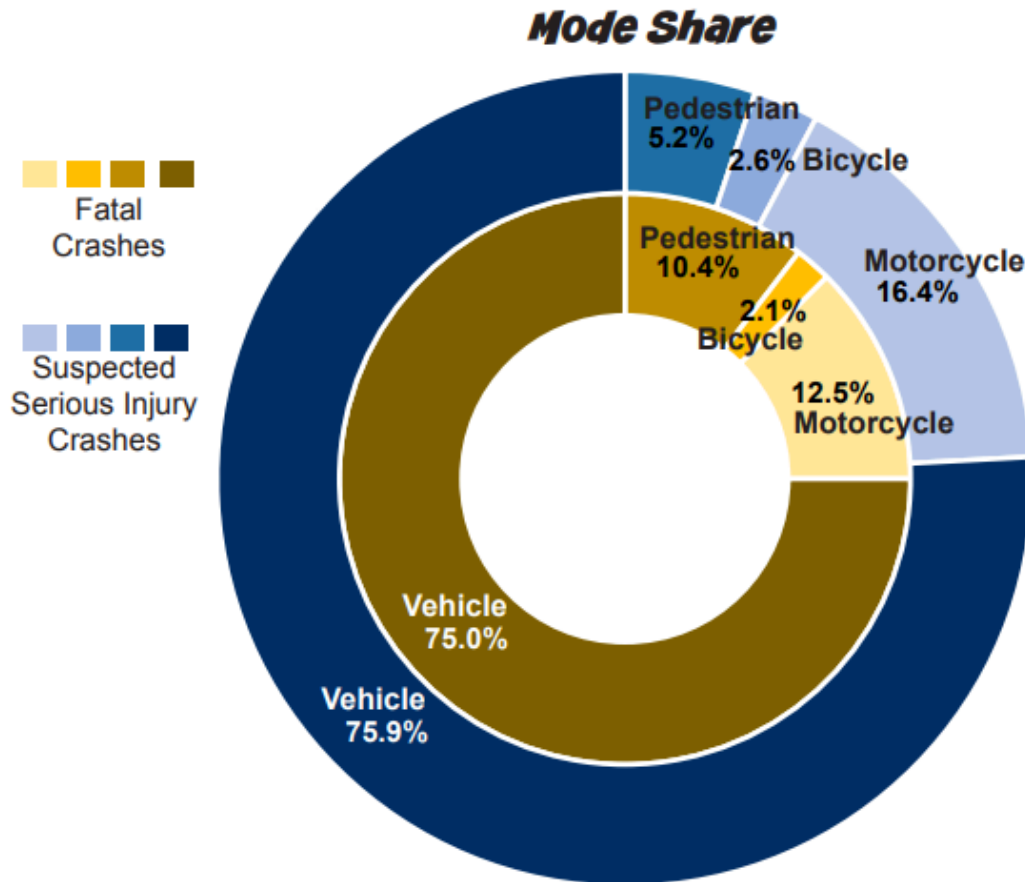
| Means of Transportation to Work (ACS) | 2015-2019 | 2019-2023 |
|---------------------------------------|---------------|---------------|
| Total Commuters | 36,318 | 36,003 |
| Public transportation | 0.6% | 0.4% |
| Walked | 5.7% | 6.4% |
| Bicycle | 0.5% | 0.3% |
| Worked from home | 3.0% | 7.4% |

Commute Mode Share
ACS 2019-2023



Crash Counts: Fatal + Suspected Serious Injuries 2020-2024

Of the 1,226 injury crashes that occurred on Indiana County roadways, excluding expressways, from 2020-2024, 48 ended in death and in 116 life-altering serious injury. Breaking down injury crashes by mode, there were 12 by bicycle, 45 involving a pedestrian, 100 by motorcycle and 1,069 by vehicle across the analysis period. Another 1,722 crashes incurred property damage only.



From 2020 to 2024 Indiana County had 1,226 crashes with 48 ending in death and 116 resulting in suspected serious injury.

Source: Get Safe! SPC Regional Transportation Safety Action Plan 2025

County Plans, Policies + Land Use Controls

| PLANS + POLICIES | | LAND USE CONTROLS | |
|--------------------------------------|---|---|---|
| Comprehensive Plan | <i>Where We Live; A Comprehensive Plan for Indiana County, PA (2012)</i> | Subdivision and/or Land Development Ordinance (SALDO) | Indiana County Subdivision Ordinance |
| Open Space, Greenways + Trails Plan | Indiana County Open Space, Greenways, and Trails Plan (2010) | Zoning Ordinance | Indiana County Special Recreation and Conservation Zoning Ordinance |
| Bicycle/Pedestrian or AT Plan | <i>Walk, Bike, Ride, Roll! Active Transportation Plan for Indiana County (2022)</i> | Official Map | |
| Other Plans or Studies related to AT | | | |
| Complete Streets Policy | | | |

[View SPC's Active Transportation Plan / StoryMap](#)

Local Government Multimodal Plans and Policies

| Municipalities* | Bicycle and/or Pedestrian Plan | AT Plan | Complete Streets Policy | Vision Zero Resolution | Bicycle Parking Ordinance | Design Standards for Safety + Accessibility | Construction Zone Policy | Safety Action Plan | Traffic Calming Policy | Curbside Management Policy | TDM Policy |
|------------------------|--------------------------------|---------|-------------------------|------------------------|---------------------------|---|--------------------------|--------------------|------------------------|----------------------------|------------|
| Indiana Borough | | ✓ | ✓ | | | | | | | | |
| White Township | | | ✓ | | | | | | | | |

*This list includes only municipalities that have reported having a multimodal plan or policy. Others either do not have one or have not shared that information with us.

Other Projects or Programs that Support Active Transportation

| Organization | Project or Program | Description |
|---|--|---|
| Indiana County Office of Planning and Development | Indiana County Active Transportation Advisory Committee (ICATAC) | Established by the Indiana County Office of Planning and Development in collaboration with community health and planning partners, the advisory group sponsors programs and efforts to improve safety and encourage biking, walking, and using transit in Indiana County. |
| Indiana County Parks and Trails | Indiana County Decathlon | Organized in collaboration with community health and planning partners and local volunteers, the program offers a variety of walking tours or self-guided walks February through May to promote health, well-being, physical activity and community engagement across the county. |
| Indiana County | Route 22 Bicycle Pedestrian Bridge | The Route 22 Pedestrian-Bicycle Bridge Project involves construction of a pedestrian-bicycle bridge over vehicular traffic on US Route 22. The Bridge is located in Burrell Township, Indiana County, just west of the US Route 119 and Route 22 interchange. Upon completion, the Bridge will extend the Hoodlebug and Ghost Town Trail systems across Route 22 and connect business, educational, and employment centers along the Route 22 corridor. |
| Indiana Borough | Bike-Pedestrian Committee | Indiana Borough's Bike-Pedestrian Committee typically meets monthly to discuss ways to improve transportation access and safety. |
| Indiana Borough | Pedestrian Road Safety Audit - 2025 (PennDOT Connects) | Road Safety Audits (RSAs) are a proactive, formal safety performance examination of an existing roadway or future roadway project and its surrounding area. An independent and multi-disciplinary team conducts the assessment with the intent of improving safety—and may be focused particularly on pedestrian and bicyclist safety. The RSA Team considers how roadway, traffic, environmental, and human factors impact safety, within the context of mobility, access, surrounding land use, and aesthetics.. (FHWA) |

Community Designations

Designations

Community designations bring recognition that boosts tourism, business investment, and funding opportunities, while also signaling a commitment to safe, active, and healthy lifestyles that enhance community pride and quality of life.



0

Bicycle Friendly Communities

- Indiana Borough, Honorable Mention (Spring 2021)

1

Trail Towns

- Saltsburg

1

Walk Friendly Communities

- Indiana Borough