

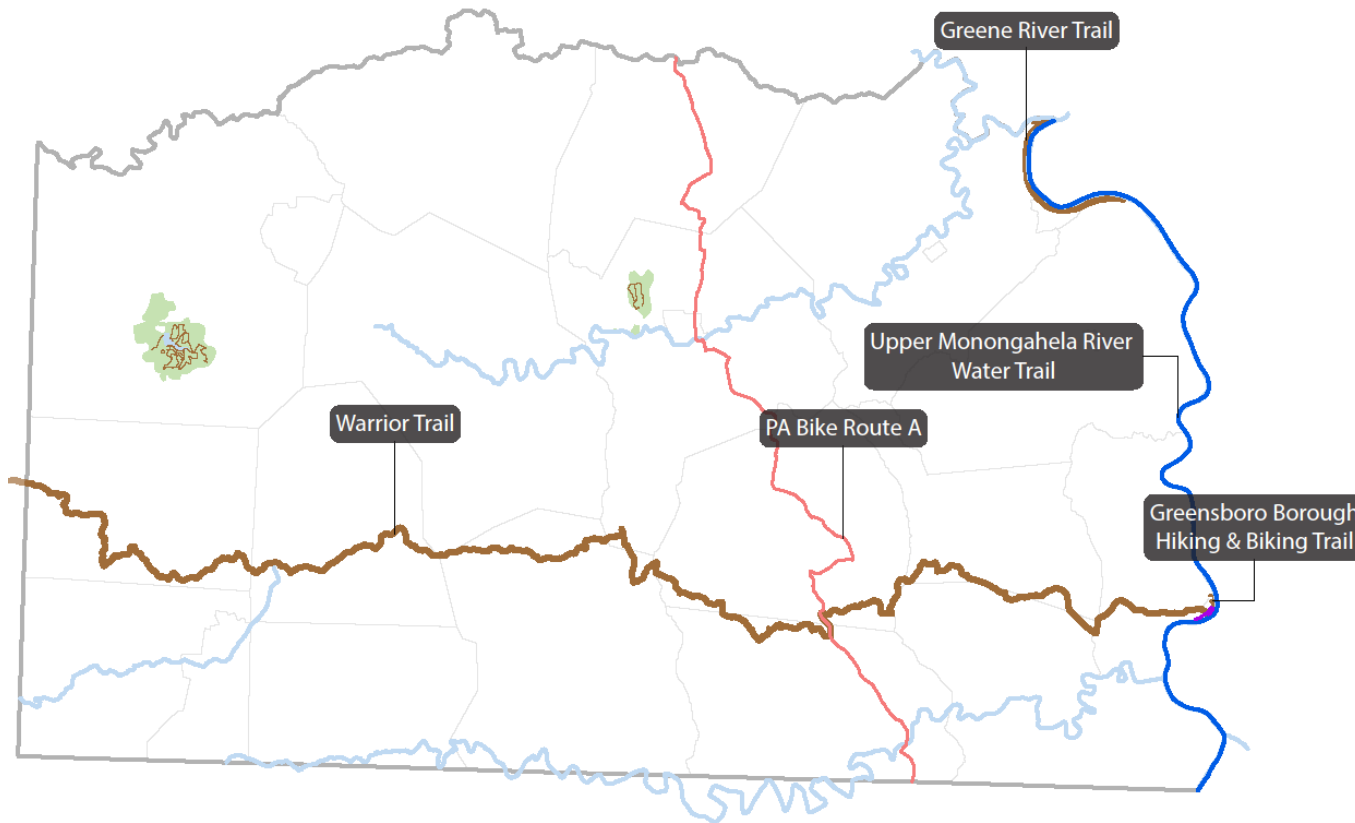


# Greene County Active Transportation Profile

REGIONAL ACTIVE TRANSPORTATION PLAN FOR SOUTHWESTERN PENNSYLVANIA

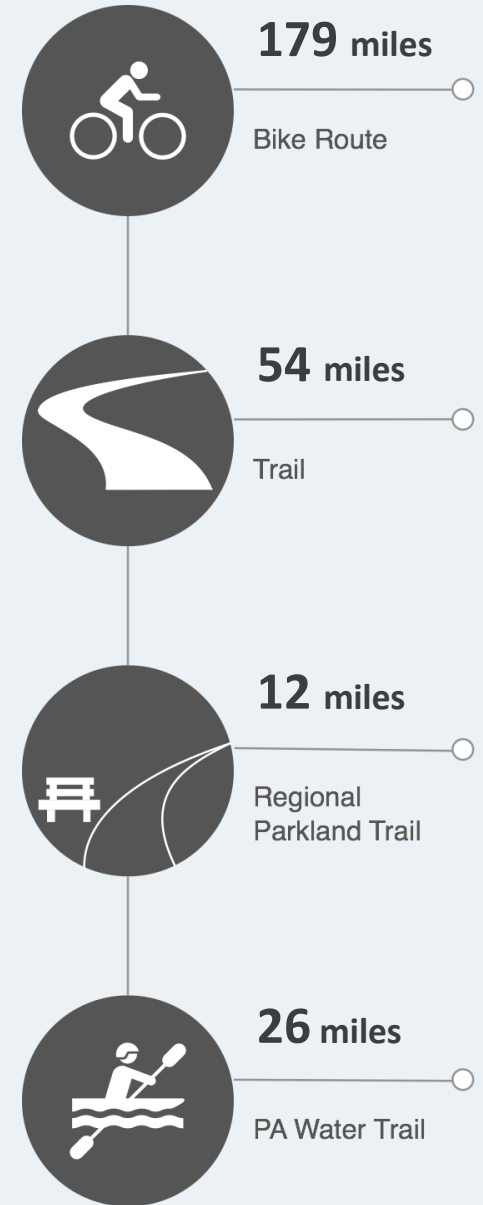


Trails + Bike Routes



- Parkland
- Parkland Trail
- Off Street Trail
- - - On Street Trail
- Local Bike Route
- Navigable Waterway
- Designated PA Water Trail
- PA Bike Route A

**Other Water/Paddle Trail:** Navigable waterways that are not designated PA Water Trails also offer significant paddling opportunities and contribute to the health of a community. **Ten Mile Creek, Dunkard Creek and Whiteley Creek** are navigable waterways



# GREENE COUNTY

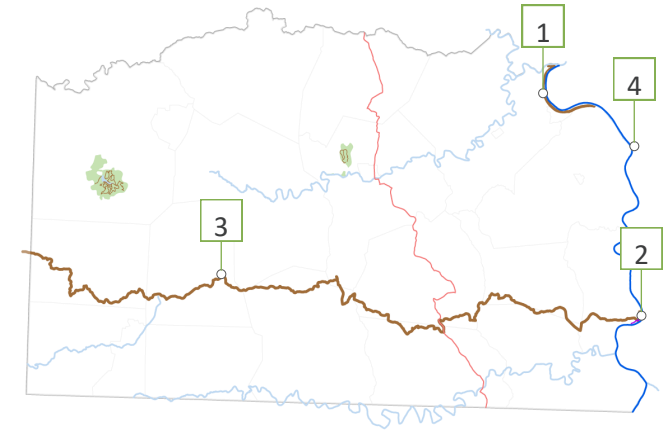
## FACILITIES

### Facility Metrics

Facilities	2017
Miles of sidewalk (inventoried)	0
Miles of local on-road bike route	34.2
Miles of PA Bike Route A	144.8
Miles of protected bike lanes	0
Miles of bike lanes	0
Miles of sharrows	0
Miles of trail	65.5
<i>Miles of rail-trail or separated paths</i>	53.8
<i>Miles of trail in regional parks &amp; recreation areas</i>	11.7
Miles of navigable waterway	142.3
<i>Miles of designated PA Water Trails</i>	25.7

Support Facilities	2017
Bike facilities	0
<i>Bike racks (inventoried)</i>	0
<i>Bike repair stations</i>	0
Trail parking and/or access points	13
Boat launches (source: PA Fish & Boat Commission)	5
<i>State/Federal (PFBC, State Parks, PGC or COE)</i>	1
<i>Local government</i>	1
<i>Private ownership</i>	3

Source: SPC GIS; inventoried as of 12/31/17 unless otherwise noted



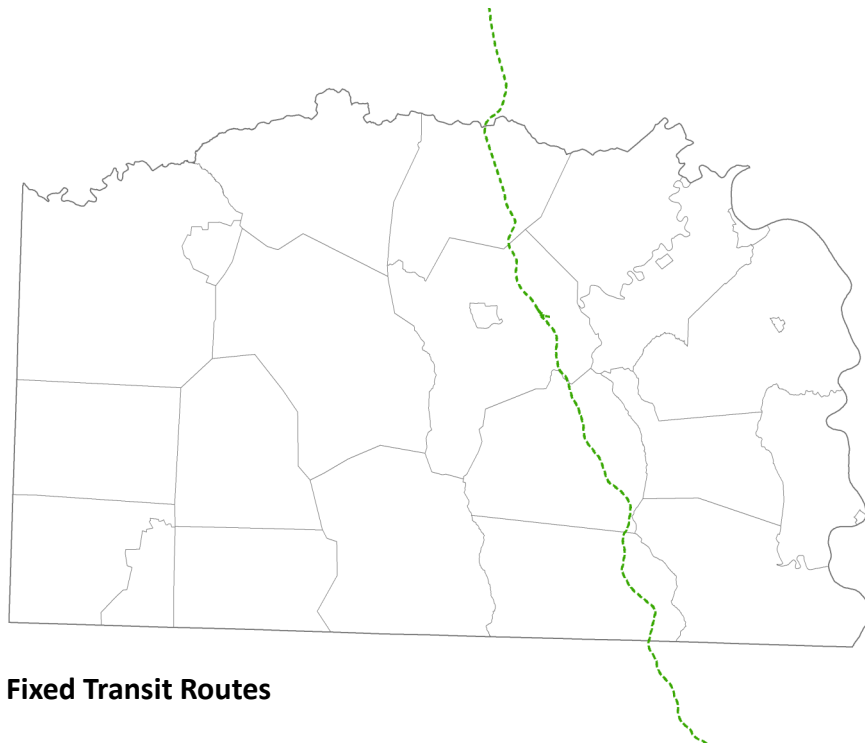
### Land + PA Water Trail Highlights

Trail	Functional Classification	Total Miles	Miles in County
1. Greene River Trail	Local	5.2	5.2
2. Greensboro Borough Hiking & Biking Trail	Local	1.5	1.5
3. Warrior Trail	Regional Arterial	67	47.1
4. Upper Monongahela River Water Trail	Regional Arterial	65	26

### Trail Organizations

Organization	County Focus
Greene County Department of Parks & Recreation	Greene River Trail. Promotion of all trails in Greene County.
Nathanael Greene Historical Society	Greensboro Borough Hiking and Biking Trail, Historic Walking Trail
Warrior Trail Association	Warrior Trail
Upper Monongahela River Association	Upper Monongahela River Water Trail

## County Transit



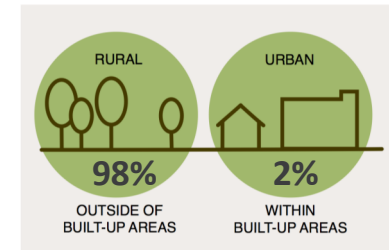
### Fixed Transit Routes

Occasional Service  
(Less than 5 days / week)

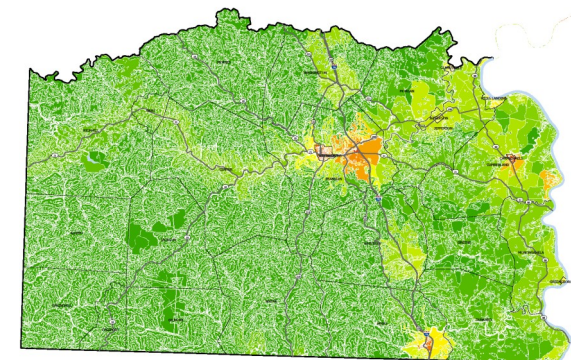
### Greene County Transportation Department

System Type	Community Transportation
Total Shared-Ride Trips	35,608
65 + Trips	12,846

## County Character



### Land Use Development Patterns



High Density  
Low Density

## Infrastructure Projects

1  
**Trail Expansion to Parks**  
Waynesburg University

2  
**Walking Path**  
Evergreen Technology Park



Private

**1. Trail Expansion to Parks, Waynesburg University**—The university has agreed to expand its campus trail network to connect with Waynesburg Borough parks.

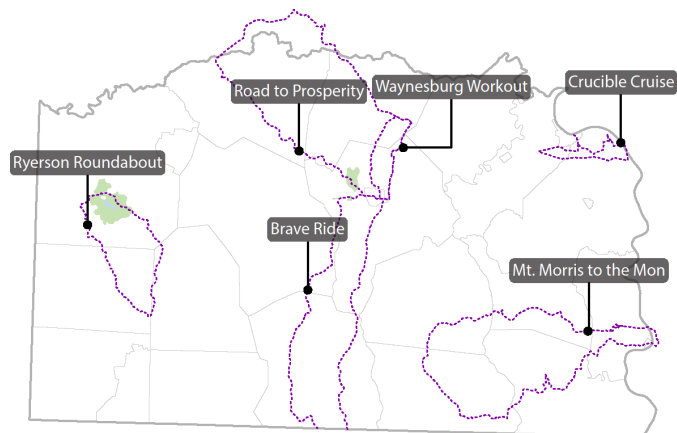
**2. Walking path at Evergreen Technology Park**—This mowed path behind the airport is the unofficial first segment of the **Central Waynesburg Trail**. This future hiking and biking trail along Ten Mile Creek will connect Central Greene High School, the Greene County Fairgrounds, the Greene County Airport, the Greene County Historical Museum, the Wal-Mart store off Murtha Drive, and other recreation and community sites.

Public

### Wisecarver Reservoir

This 380-acre reservoir in Franklin Township was drained in 2010 after problems were discovered on the face of the dam. Work is underway to reuse the property as a recreation site. The park will include three ball fields, children's play area, camping areas, recreation area, **boat launch** and pavilions. The southern end also will have an educational center, concessions, restrooms, picnic areas, **trail head** and parking. A **walking trail** will encircle the reservoir and two **cross country tracks** will run through the park.

## Non-Infrastructure Projects



### SR 1010 over Pumpkin Run

This bridge in Rice's Landing Borough currently has a sidewalk on the north side of the bridge (Main Street) that connects the Greene River Trail to Water Street. Enhancements to improve access to Greene River Trail and Pumpkin Run Park will be considered when this bridge is rehabilitated or replaced.

Accessibility

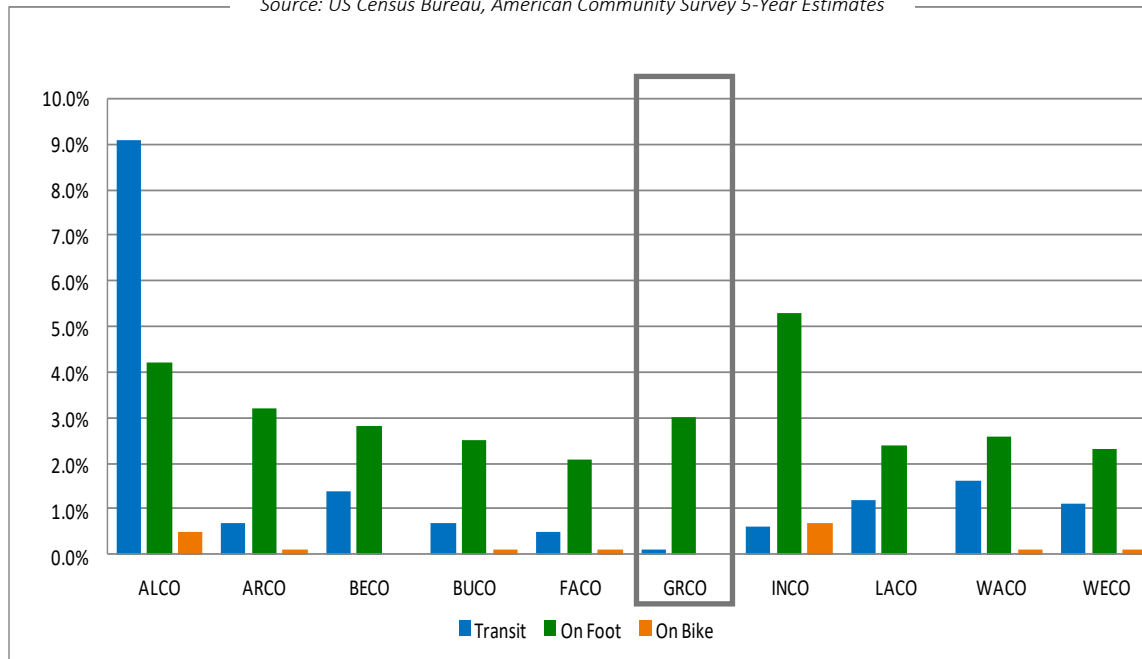
Connectivity

**Six Great Rides:** Greene County promotes 6 great bicycle rides, one of which is located along PA Bike Route A.

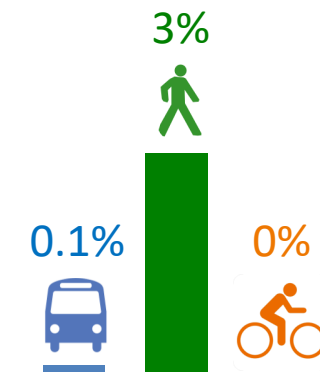
## Census Commute Mode Data

### Census Commute Mode Comparison for SPC Counties: 2011-2015

Source: US Census Bureau, American Community Survey 5-Year Estimates



### 2011-2015 Commute Mode Greene County



### Greene County, PA: 2006-2010 & 2011-2015

Means of Transportation to Work	2006-2010	2011-2015
<b>Total Commuters</b>	<b>15,485</b>	<b>13,954</b>
On bike	0.1%	0%
On foot	3.2%	3%
By transit	0.4%	0.1%

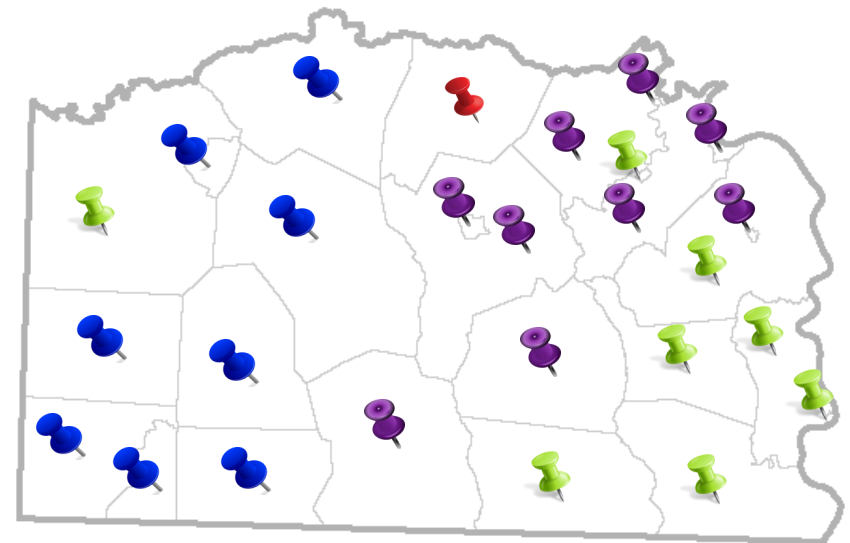
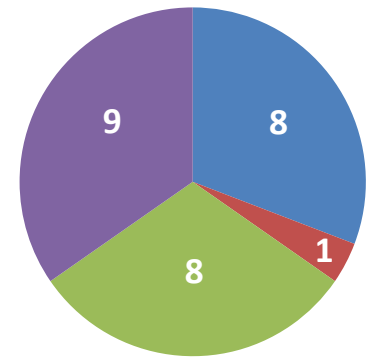
County Planning + Land Use Controls

County Plans & Land Use Controls	Document Title	Active Transportation
<b>PLANS</b>		
Comprehensive Plan	Strategy for a Greene Tomorrow (2008)	✓
Open Space, Greenways & Trails Plan	Greene County Comprehensive Parks, Recreation & Trails / Greenways Plan (2008)	✓
Bicycle/Pedestrian or AT Plan		
Other Plans or Studies related to AT		
<b>LAND USE CONTROLS</b>		
Subdivision and/or Land Development Ordinance (SALDO)	Greene County Subdivision and Land Development Ordinance (1995)	✓
Zoning Ordinance		
Official Map		

Municipal Planning + Land Use Controls

Of Greene County's 26 municipalities, the following number of municipalities have:

- No Comprehensive Plan—No Land Use Controls
- No Comprehensive Plan—Land Use Control
- Comprehensive Plan—No Land Use Controls
- Comprehensive Plan—Land Use Controls

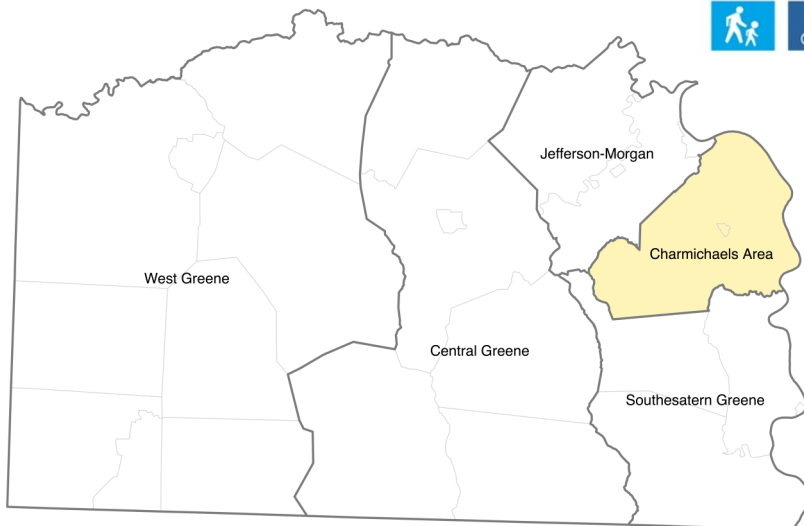




Current Programs, Policies + Designations

## Safe Routes to Schools

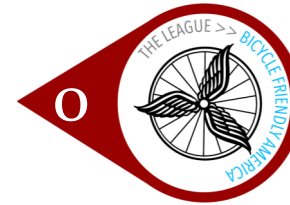
In spring 2017, SPC administered a Safe Routes to School (SRTS) Program survey to identify the level of participation and/or interest in the SRTS program. Based on the responses that were received:



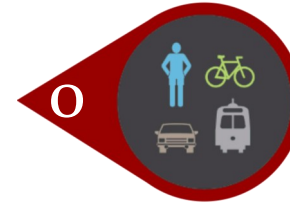
 School Districts interested in the SRTS program

**0** School Districts currently participate in a Safe Routes to School (SRTS) program.

**1** School District is interested in learning more about funding opportunities for creating a Safe Routes to School (SRTS) program: Charmichaels Area.



Bicycle Friendly Communities



Complete Streets Policy



Trail Towns



River Towns

- Greensboro
- Rice's Landing



Walk Friendly Communities



WalkWorks