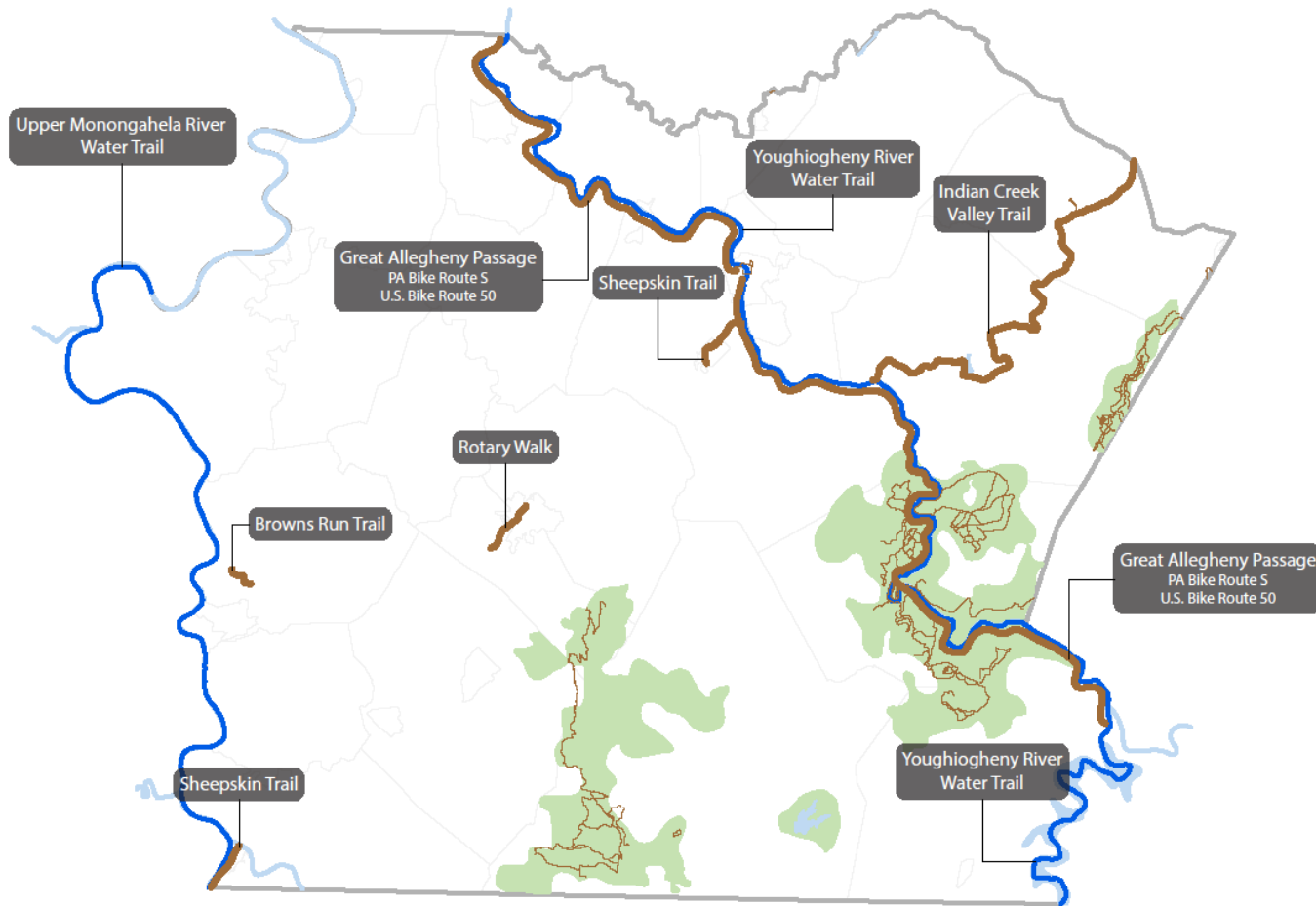




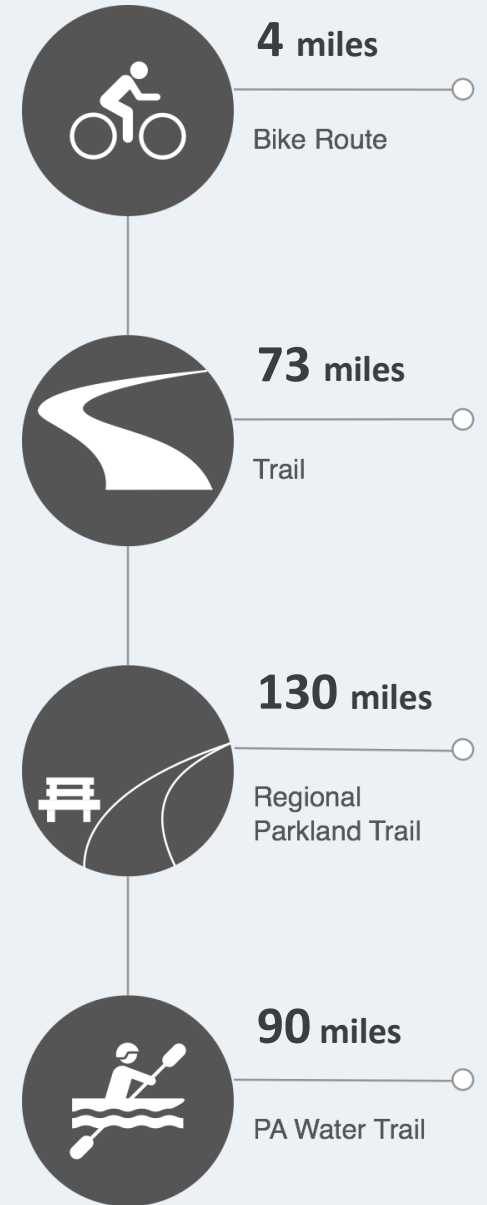
Fayette County Active Transportation Profile

REGIONAL ACTIVE TRANSPORTATION PLAN FOR SOUTHWESTERN PENNSYLVANIA

Trails + Bike Routes



- Parkland
- Navigable Waterway
- Parkland Trail
- Designated PA Water Trail
- Off Street Trail
- - - On Street Trail



Facility Metrics

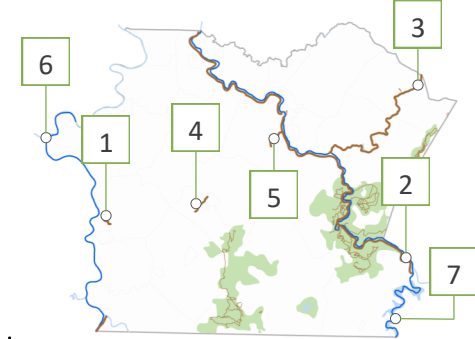
Facilities 2017

Miles of sidewalk (inventoried)	0
Miles of local on-road bike route	2.3
Miles of PA Bike Route S + U.S. Bike Route 50 (off-road trail)	44.5
Miles of protected bike lanes	.36
Miles of bike lanes	1.3
Miles of sharrows	0
Miles of trail	203
<i>Miles of rail-trail or separated paths</i>	72.8
<i>Miles of trail in regional parks & recreation areas</i>	130.2
Miles of navigable waterway	143.5
<i>Miles of designated PA Water Trails</i>	89.5

Support Facilities 2017

Bike facilities	22
<i>Bike racks (inventoried)</i>	22
<i>Bike repair stations</i>	0
Trail parking and/or access points	45
Boat launches (source: PA Fish & Boat Commission)	13
<i>State/Federal (PFBC, State Parks, PGC or COE)</i>	8
<i>Local government</i>	3
<i>Private ownership</i>	2

Source: SPC GIS; inventoried as of 12/31/17 unless otherwise noted



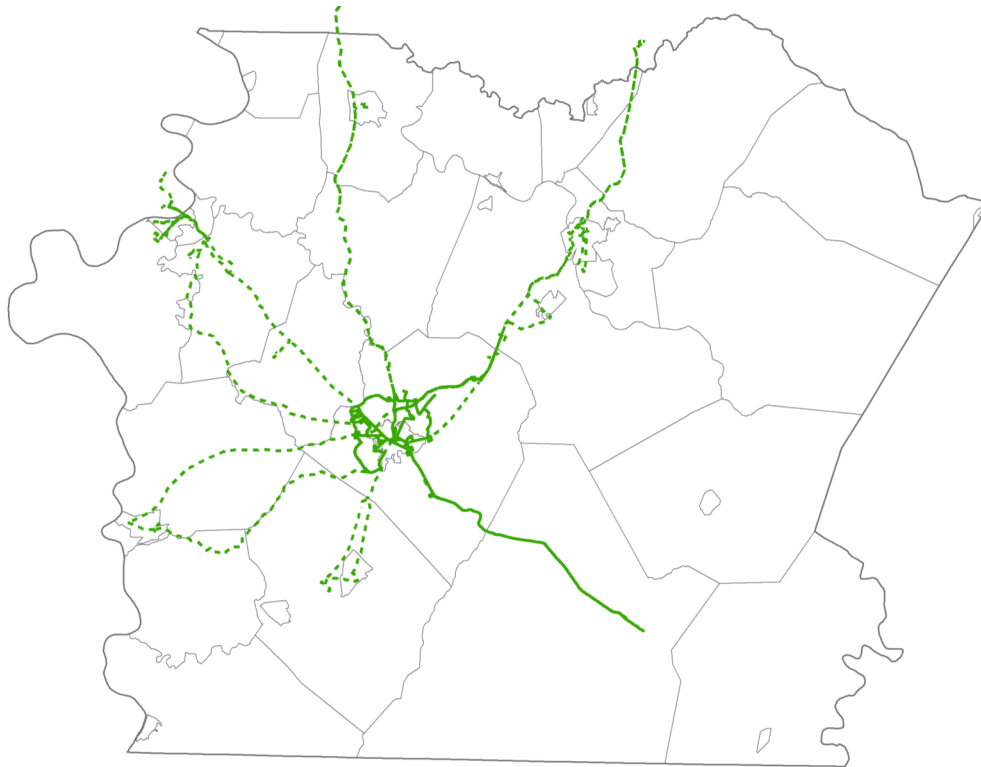
Land + PA Water Trail Highlights

Trail	Functional Classification	Total Miles	Miles in County
1. Browns Run Trail	Local	1.9	1.9
2. Great Allegheny Passage (PA Bike Route S + U.S. Bike Route 50)	Regional Arterial	150	44.5
3. Indian Creek Valley Trail	Community Collector	12.6	10.8
4. Rotary Walk	Local	1.9	1.9
5. Sheepskin Trail	Community Collector	13.7	13.7
6. Upper Monongahela River Water Trail	Regional Arterial	65	30.2
7. Youghiogheny River Water Trail	Regional Arterial	71	59.3

Trail Organizations

Organization	County Focus
German Township	Browns Run Trail
Allegheny Trail Alliance + Regional Trail Corporation	Great Allegheny Passage
Mountain Watershed Association	Indian Creek Valley Trail
Uniontown	Rotary Walk
Fayette County + National Road Heritage Corridor	Sheepskin Trail
Morgantown Area Chamber of Commerce	Upper Monongahela River Water Trail
Mountain Watershed Association	Youghiogheny River Water Trail
Yough River (Bike) Trail Council	Great Allegheny Passage, Sheepskin Trail

County Transit



Fixed Transit Routes

Regular Service
(5 or more days / week)

Occasional Service
(Less than 5 days / week)

Fayette Area Coordinated Transportation

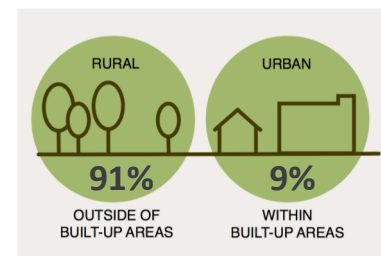
System Type	Urban
Total Passengers	157,095
Senior Passengers	21,783
Current Fleet Size (motor bus)	12
Buses Equipped with Bike Racks	4

Community Transportation

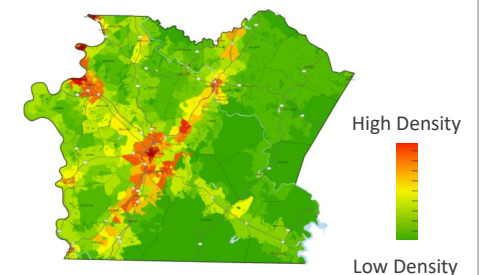
Total Shared-Ride Trips	105,976
65 + Trips	34,216

Source: Pennsylvania Public Transportation Performance Report – Fiscal Year 2015-16

County Character

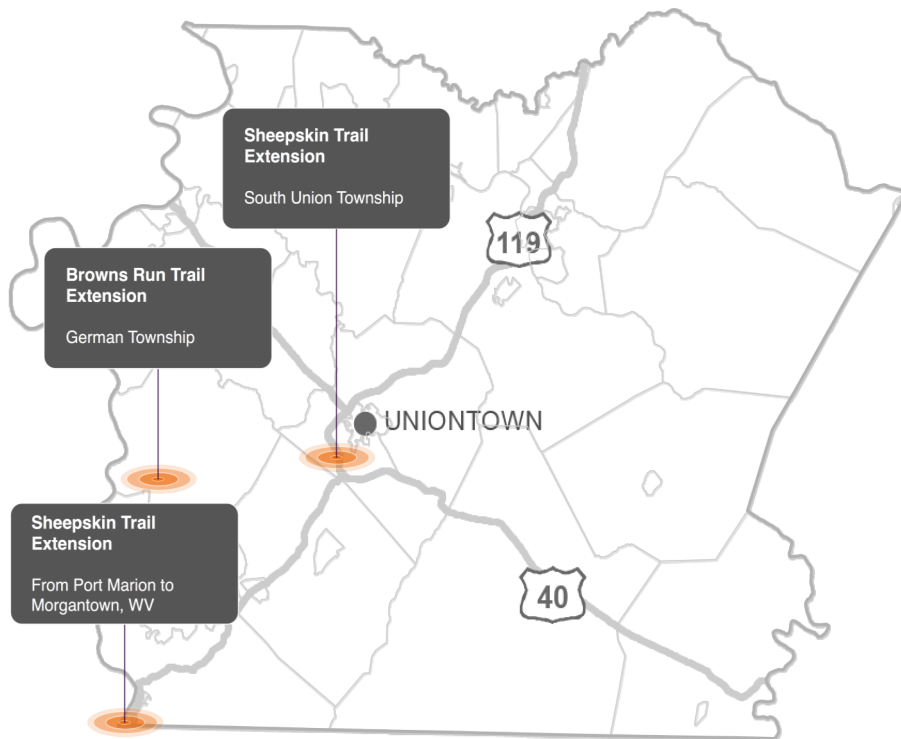


Land Use Development Patterns



Infrastructure Projects

PennDOT Connects

**PA 711 Crawford Avenue Bridge****Accessibility**

Due to the bridge's proximity to the Great Allegheny Passage multiuse trail, the designers of this bridge project in the City of Connellsville will investigate the possibility of incorporating dedicated bike lanes, wider shoulders, sidewalks, or other trail connection options in order to address the community's desire to tie the trail traffic into the downtown business district.

Ohiopyle Multimodal Gateway Project**Accessibility**

The focus of this project is to improve safety and connectivity for pedestrians, bicycles, motorists and boaters in Ohiopyle Borough, which is the home of Ohiopyle State Park. An engineering study looked at a range of alternatives including the potential for a pedestrian tunnel under PA 381. The study also looked at bike lanes, sidewalks, and traffic calming measures through the downtown area in the park in order to enhance safety for all modes.

Bicycle/Pedestrian Counts + Trends

Great Allegheny Passage

Annual Estimate

COUNTS

800,000
Visitors

2009

> 1 million
Visitors

2016

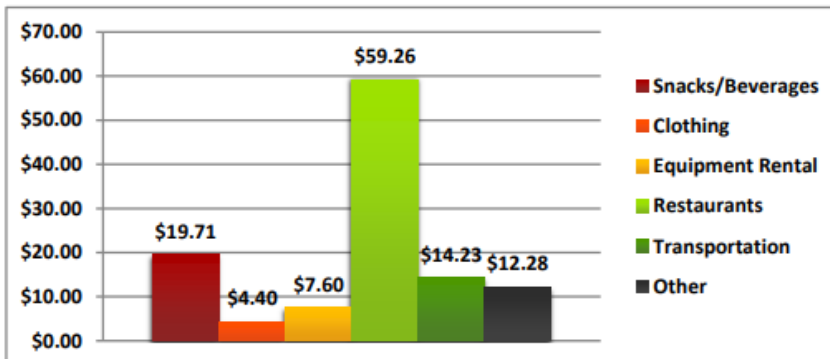
Source: Allegheny Trail Alliance



Economic Impact

TRENDS

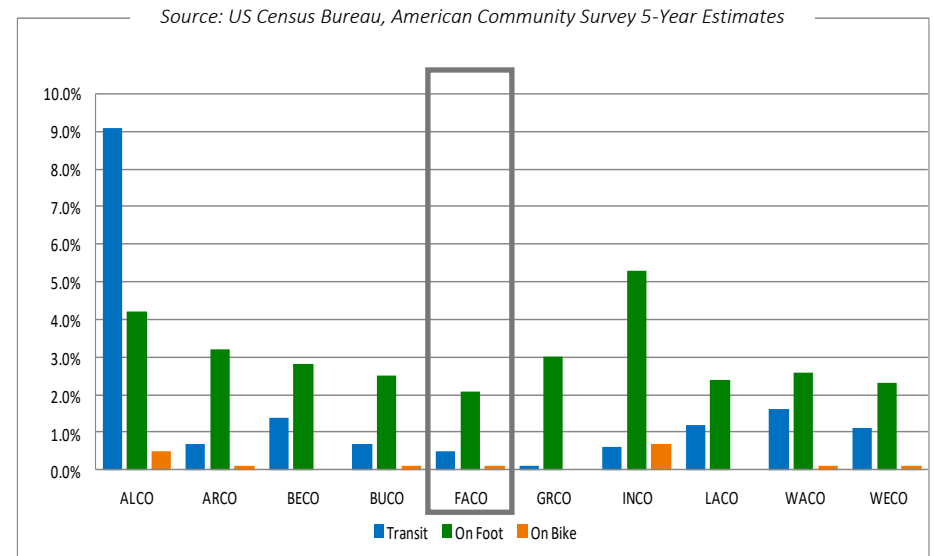
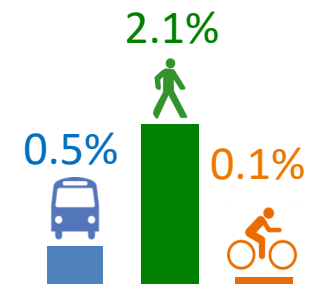
Average Spending per Visit, by Category



(Source 2015 Trail User and Business Survey Report: Great Allegheny Passage, March 2015)

Census Commute Mode Data

Census Commute Mode Comparison for SPC Counties: 2011-2015

2011-2015
Commute Mode
Fayette County

Fayette County, PA: 2006-2010 & 2011-2015

Means of Transportation to Work	2006-2010	2011-2015
Total Commuters	52,761	51,035
On bike	0%	0.1%
On foot	2.7%	2.1%
By transit	0.3%	0.5%

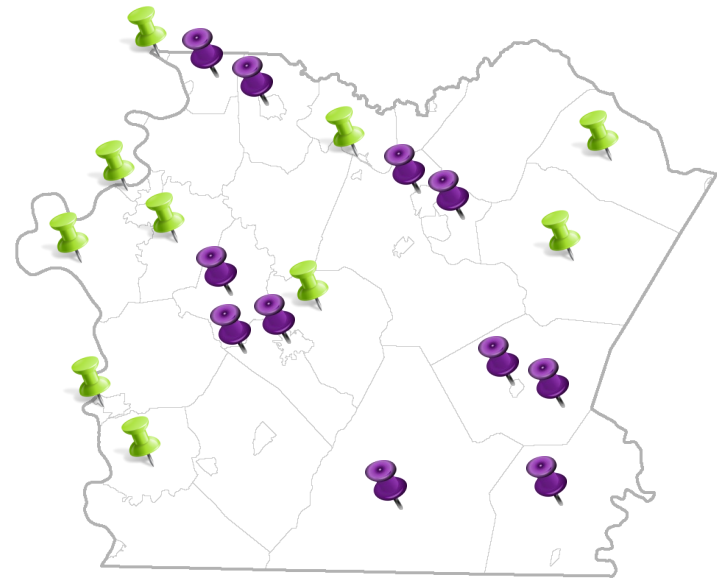
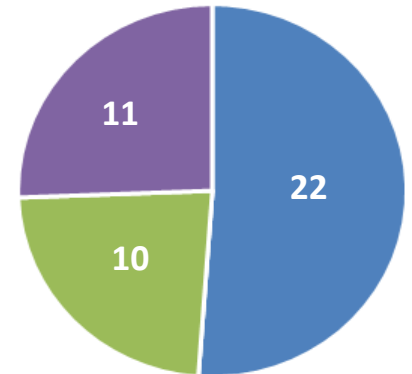
County Planning + Land Use Controls

County Plans & Land Use Controls	Document Title	Active Transportation
PLANS		
Comprehensive Plan	Fayette County Comprehensive Plan (2000)	✓
Open Space, Greenways & Trails Plan	Fayette County Comprehensive Parks, Recreation, Open Space, Greenways & Trails Plan (2007)	✓
Bicycle/Pedestrian or AT Plan		
Other Plans or Studies related to AT	Road Safety Audit, US 119 (2014)	✓
LAND USE CONTROLS		
Subdivision and/or Land Development Ordinance (SALDO)	Fayette County Subdivision and Land Development Ordinance (2006)	✓
Zoning Ordinance	Fayette County Zoning Ordinance (2006)	
Official Map		

Municipal Planning + Land Use Controls

Of Fayette County's 43 municipalities, the following number of municipalities have:

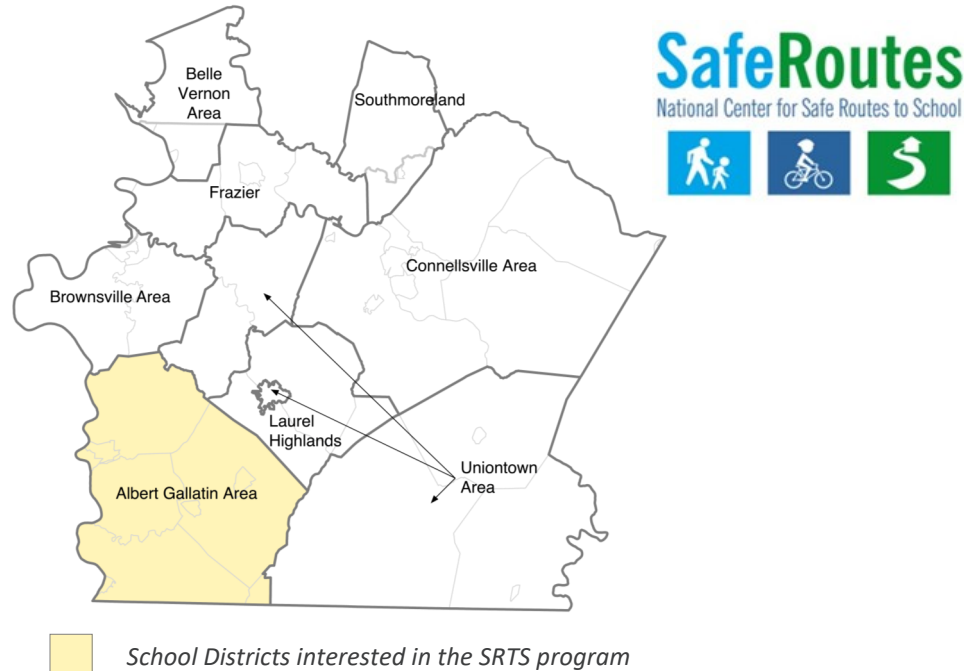
- No Comprehensive Plan—No Land Use Controls
- Comprehensive Plan—No Land Use Controls
- Comprehensive Plan—Land Use Controls



Current Programs, Policies + Designations

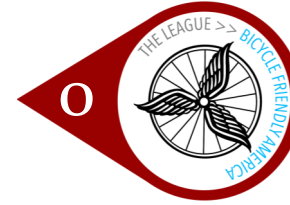
Safe Routes to Schools

In spring 2017, SPC administered a Safe Routes to School (SRTS) Program survey to identify the level of participation and/or interest in the SRTS program. Based on the responses that were received:

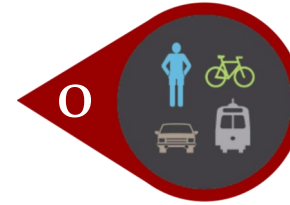


0 School Districts currently participate in a Safe Routes to School (SRTS) program.

1 School District is interested in learning more about funding opportunities for creating a Safe Routes to School (SRTS) program: Albert Gallatin Area.



Bicycle Friendly Communities



Complete Streets Policy



Trail Towns

- Connellsville
- Dunbar
- Ohiopyle
- Point Marion



River Towns

- Point Marion
- Brownsville



Walk Friendly Communities



WalkWorks

- Steps to a Healthier Fayette