

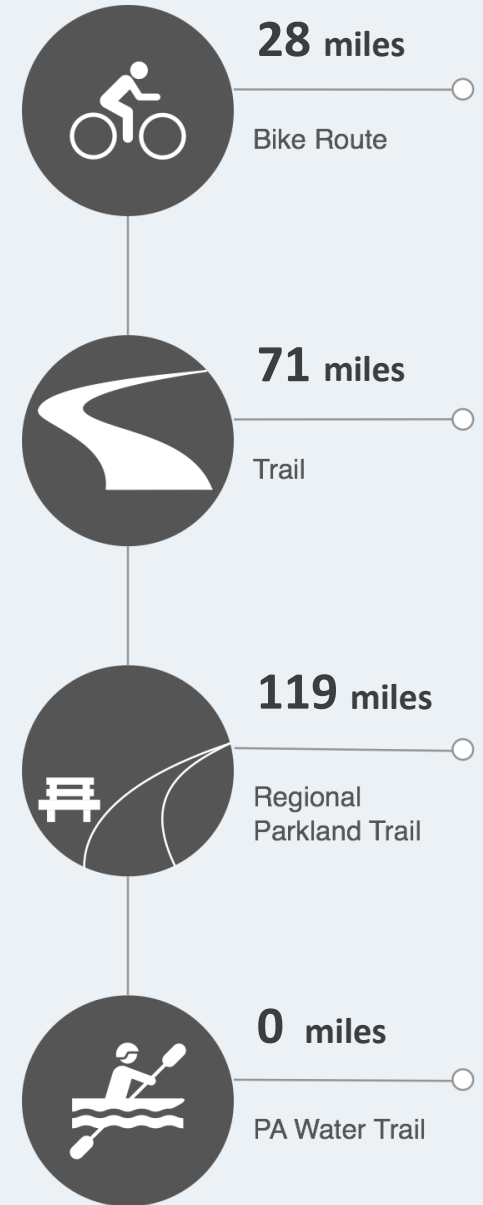
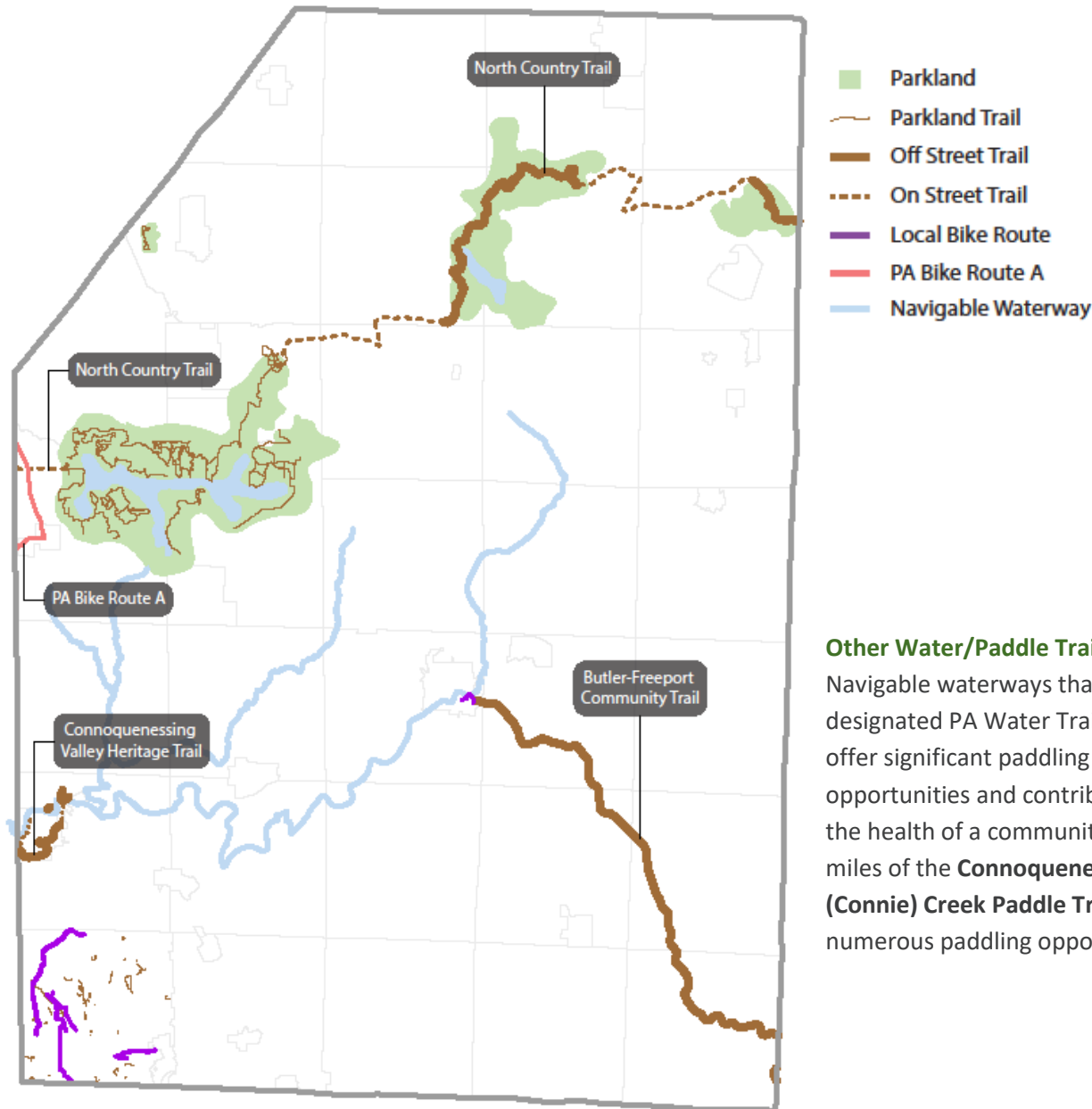


# Butler County Active Transportation Profile

REGIONAL ACTIVE TRANSPORTATION PLAN FOR SOUTHWESTERN PENNSYLVANIA



## Trails + Bike Routes

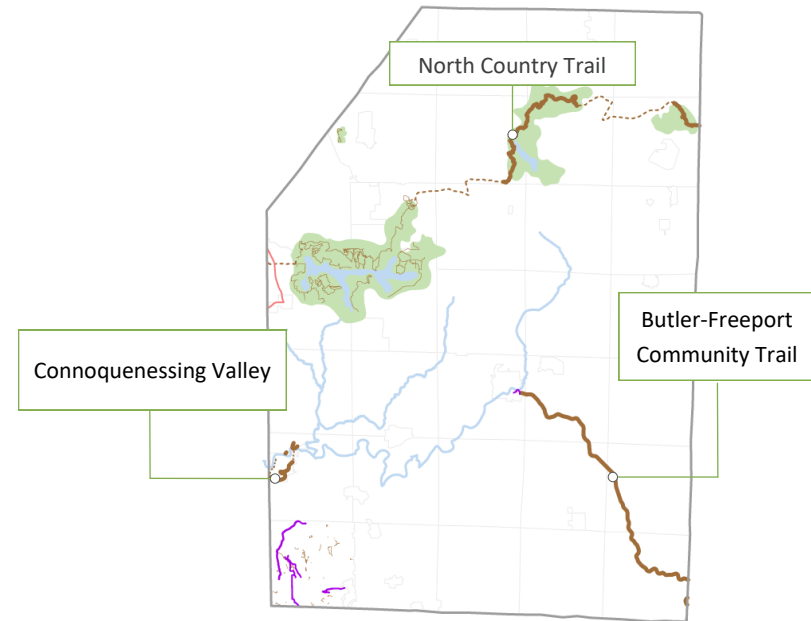


## Facility Metrics

Facilities	2017
Miles of sidewalk (inventoried)	154
Miles of local on-road bike route	9.2
Miles of PA Bike Route A	4.8
Miles of protected bike lanes	0
Miles of bike lanes	1.25
Miles of sharrows	12.8
Miles of trail	190.4
<i>Miles of rail-trail or separated paths</i>	71.2
<i>Miles of trail in regional parks &amp; recreation areas</i>	119.2
Miles of navigable waterway	93.2
<i>Miles of designated PA Water Trails</i>	0

Support Facilities	2017
Bike facilities	57
<i>Bike racks (inventoried)</i>	55
<i>Bike repair stations</i>	2
Trail parking and/or access points	71
Boat launches (source: PA Fish & Boat Commission)	21
<i>State/Federal (PFBC, State Parks, PGC or COE)</i>	21
<i>Local government</i>	0
<i>Private ownership</i>	0

Source: SPC GIS; inventoried as of 12/31/17 unless otherwise noted



## Trail Highlights

Trail	Functional Classification	Total Miles	Miles in County
North Country Trail	Regional Arterial	4,600	45
Connoquenessing Valley Heritage Trail	Neighborhood Collector	8.2	7.7
Butler-Freeport Community Trail	Community Arterial	21.4	18.5

## Trail Organizations

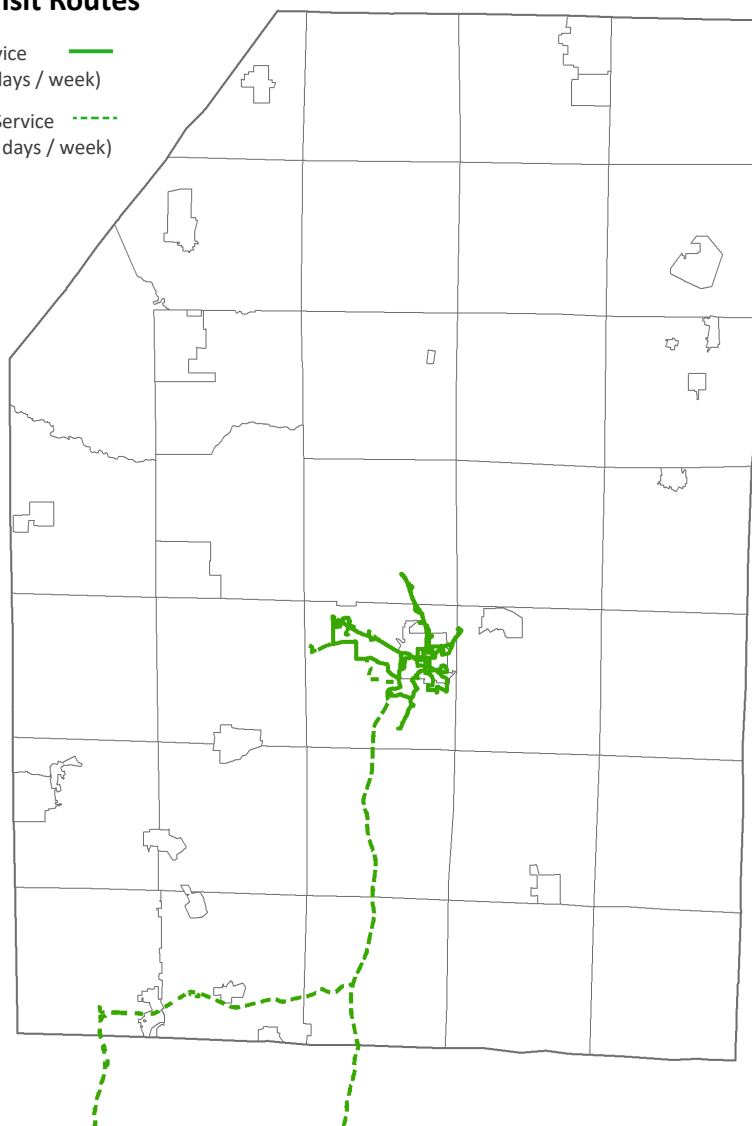
Organization	County Focus
North Country Trail Association Butler County Chapter	North Country Trail
Harmony Borough	Connoquenessing Valley Heritage Trail
Butler Freeport Community Trail Council	Butler-Freeport Community Trail

## County Transit

### Fixed Transit Routes

Regular Service  
(5 or more days / week)

Occasional Service  
(Less than 5 days / week)



### Butler Transit Authority

System Type	Rural
Total Passengers	199,830
Senior Passengers	40,159
Current Fleet Size	6
Buses Equipped with Bike Racks	6

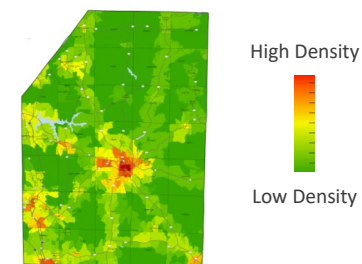
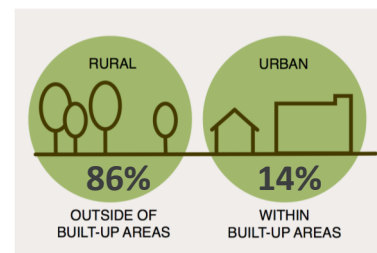
### Community Transportation

Total Shared-Ride Trips	62,320
65 + Trips	31,993

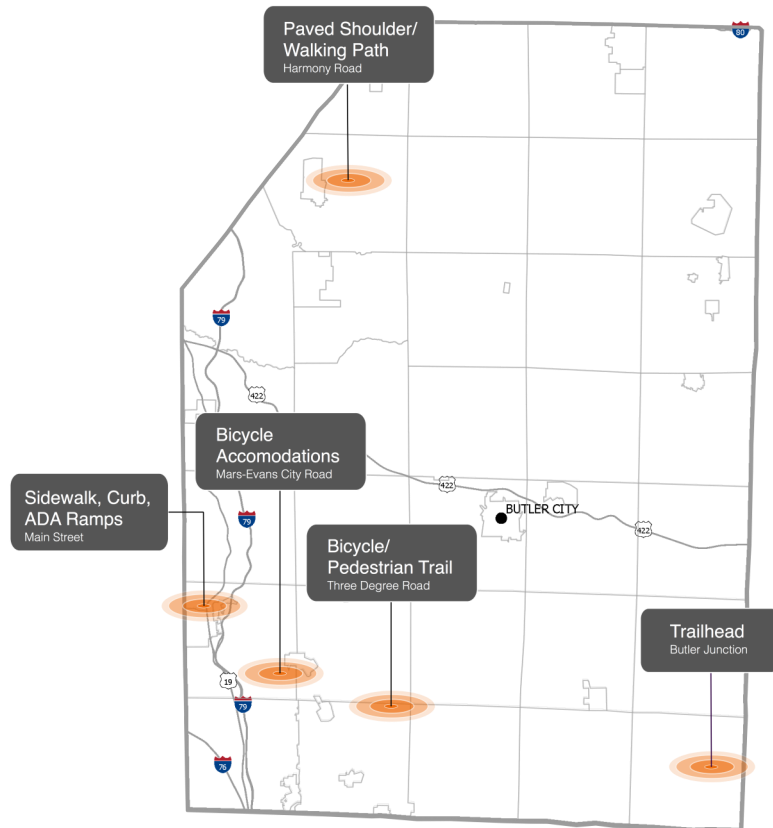
Source: Pennsylvania Public Transportation Performance Report – Fiscal Year 2015-16

## County Character

### Land Use Development Patterns



## Infrastructure Projects



## Non-Infrastructure Projects

**Planners in Action** (a multi-municipal collaboration between the townships of Pine, Marshall, Adams, Cranberry and Jackson and the Borough of Bradford Woods) are working together to develop the **Commodore Perry Regional Trail**. The envisioned concept includes 52 miles of trail and 3,8125 acres of green space.

## PennDOT Connects



## Project

SR 356

The primary goal of this project is to provide traffic flow improvements through the addition of turning and through lanes, signal retiming, and signal coordination along State Route 356 from SR 228 to SR 28 in Buffalo Township.

## Safety

During the PennDOT Connects process, consideration is also being given to upgrading pedestrian and bicycle facilities in the corridor. Pedestrian and bicycle modes are particularly important in this area due to the proximity of Freeport Area Middle School and Senior High School, as well as the Butler-Freeport Community Trail.

## Project

Three Degree Road Intersection

This safety-focused project in Adams Township includes the addition of through lanes along SR 228, turn lanes at various intersections, side road improvements and service roads for access control, drainage and guiderail upgrades, signal replacement, and new signage and pavement markings along SR 228 (Mars Crider Road) from 500 feet east of SR 3015 (Mars Valencia Road) to 1,500 feet west of SR 3007 (Three Degree Road).

## Accessibility

The project will also include sidewalks, ADA ramps, and addition of a roundabout on Three Degree Road. Adams Township is currently looking at the feasibility of connection these improvements with bicycle and pedestrian accommodations along Three Degree Road in order to connect the municipal building with the schools and knit together the existing patchwork of shared use trails in the area.

## Project

SR 68

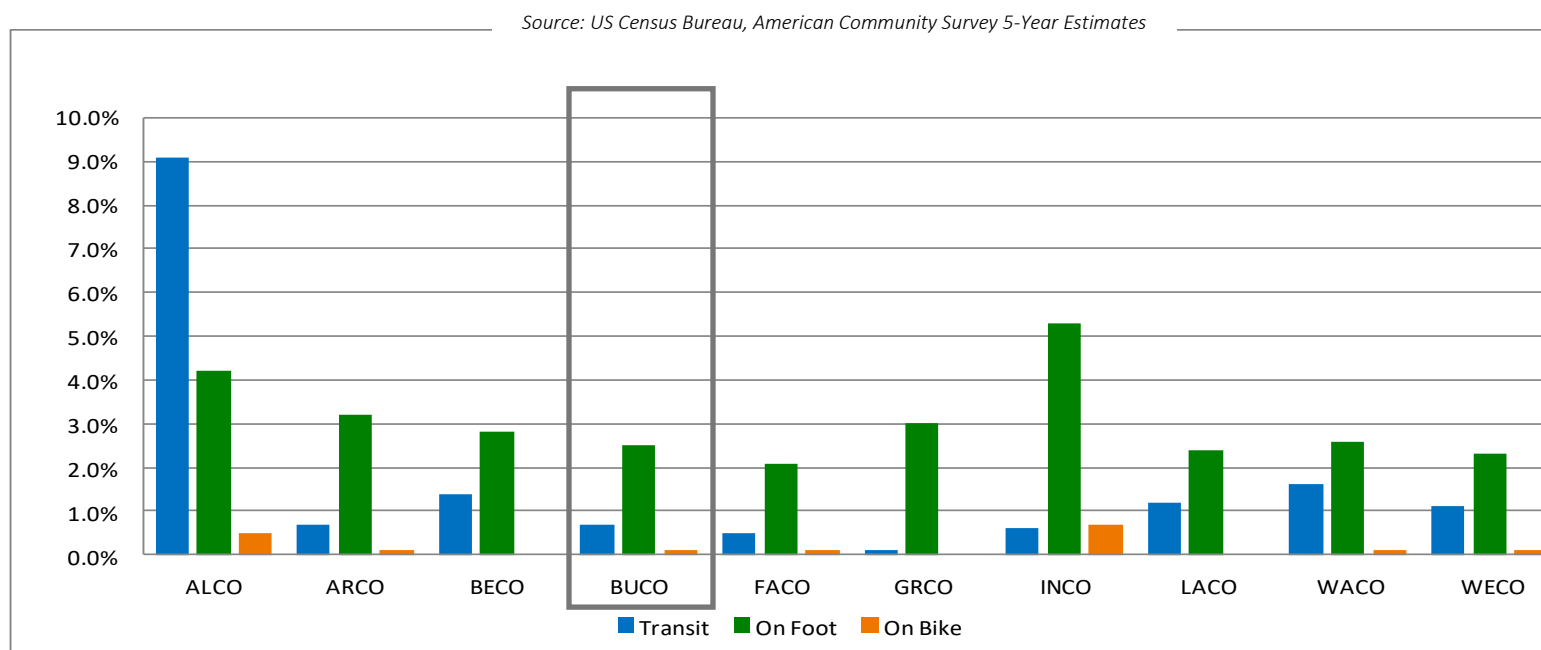
This project will include traffic signal replacements and installation of turn lanes to improve traffic flow and enhance safety along SR 68 from T-425 (Stevenson Road) to SR 3007 (Meridian Road/Benbrook Road) in Connoquenessing and Butler Townships.

## Connectivity

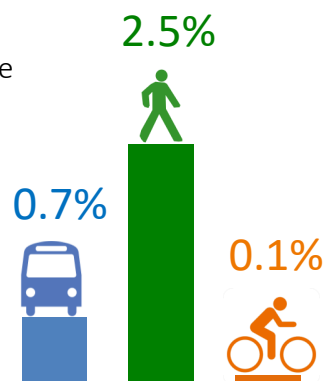
There are also opportunities to enhance bicycle and pedestrian infrastructure as part of the project in order to provide better connections between residential and commercial land uses. Increased transit service is being planned as part of a separate project, which creates the potential for this to be a truly multimodal corridor in the future.

## Census Commute Mode Data

## Census Commute Mode Comparison for SPC Counties: 2011-2015



2011-2015  
Commute Mode  
Butler County



Butler County, PA: 2006-2010 & 2011-2015

Means of Transportation to Work	2006-2010	2011-2015
<b>Total Commuters</b>	<b>86,406</b>	<b>86,034</b>
On bike	0.2%	0.1%
On foot	2.4%	2.5%
By transit	0.7%	0.7%

## County Planning + Land Use Controls

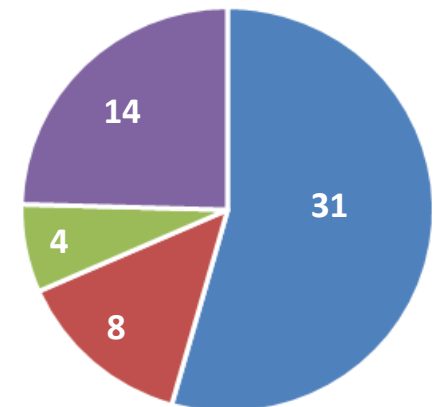
County Plans & Land Use Controls	Document Title	Active Transportation
<b>PLANS</b>		
Comprehensive Plan	Butler County Comprehensive Plan (2002)	✓
Open Space, Greenways & Trails Plan	Comprehensive Recreation, Park & Open Space Plan; Greenways & Trails Plan and Alameda Park Master Site Plan Update	✓
Bicycle/Pedestrian or AT Plan		
Other Plans or Studies related to AT	Butler County Mobility Plan (Draft 2017)	✓
<b>LAND USE CONTROLS</b>		
Subdivision and/or Land Development Ordinance (SALDO)	Butler County Subdivision and Land Development Ordinance	✓
Zoning Ordinance		
Official Map		

The **Butler County Mobility Plan** compiled recommendations from county and municipal studies and plans to determine the needs, goals, priorities and next steps for all modes of transportation. Two of the nine goals specifically addressed pedestrian and bicycle facilities: “Enhance connectivity and mobility through the maintenance and construction of interconnected streets, sidewalks, and trails, including safe bicycle and pedestrian access routes” and “Support the acquisition, development, and management of trails and greenways to increase recreational opportunities and improve quality of life”.

## Municipal Planning + Land Use Controls

Of Butler County’s 57 municipalities, the following number of municipalities have:

- No Comprehensive Plan—No Land Use Controls
- No Comprehensive Plan—Land Use Control
- Comprehensive Plan—No Land Use Controls
- Comprehensive Plan—Land Use Controls



## Municipal Planning for Biking + Walking



The **Cranberry Township Bicycle and Pedestrian Connections Plan (2011)** establishes a vision and a goal for pedestrian and bicycle mobility that encompasses economic, equity and safety principles.

Vision: Cranberry Township is a community where residents and visitors of all ages and abilities can choose to bike and walk safely and securely for everyday transportation and recreation.

Goal: To improve quality of life in the community by promoting bicycle and pedestrian transportation use, safety, and accessibility.

## Key features of the plan include:

- Existing and Proposed Bike Network Map
- Regional Connections Map
- Existing and Proposed Pedestrian Network Map



Current Programs, Policies + Designations

## Safe Routes to Schools

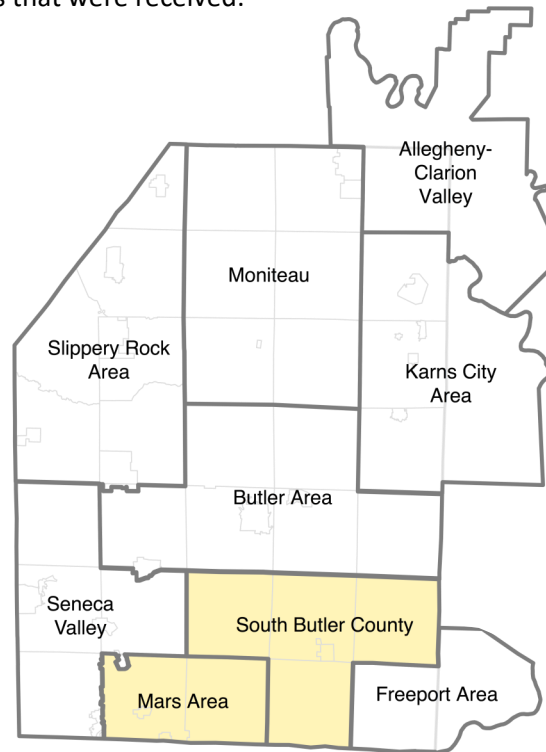
In spring 2017, SPC administered a Safe Routes to School (SRTS) Program survey to identify the level of participation and/or interest in the SRTS program. Based on the responses that were received:



### 0 School Districts

currently participate in a Safe Routes to School (SRTS) program.

**2 School Districts** are interested in learning more about funding opportunities for creating a Safe Routes to School (SRTS) program: Mars Area and South Butler County.

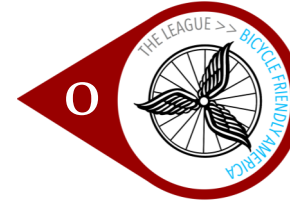


School Districts interested in the SRTS program

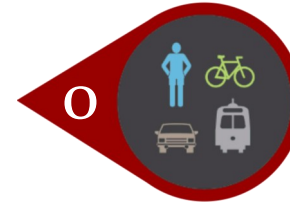


### Bike Friendly Businesses

- Cranberry Township



### Bicycle Friendly Communities



### Complete Streets Policy



### Trail Towns



### River Towns



### Walk Friendly Communities



### WalkWorks