

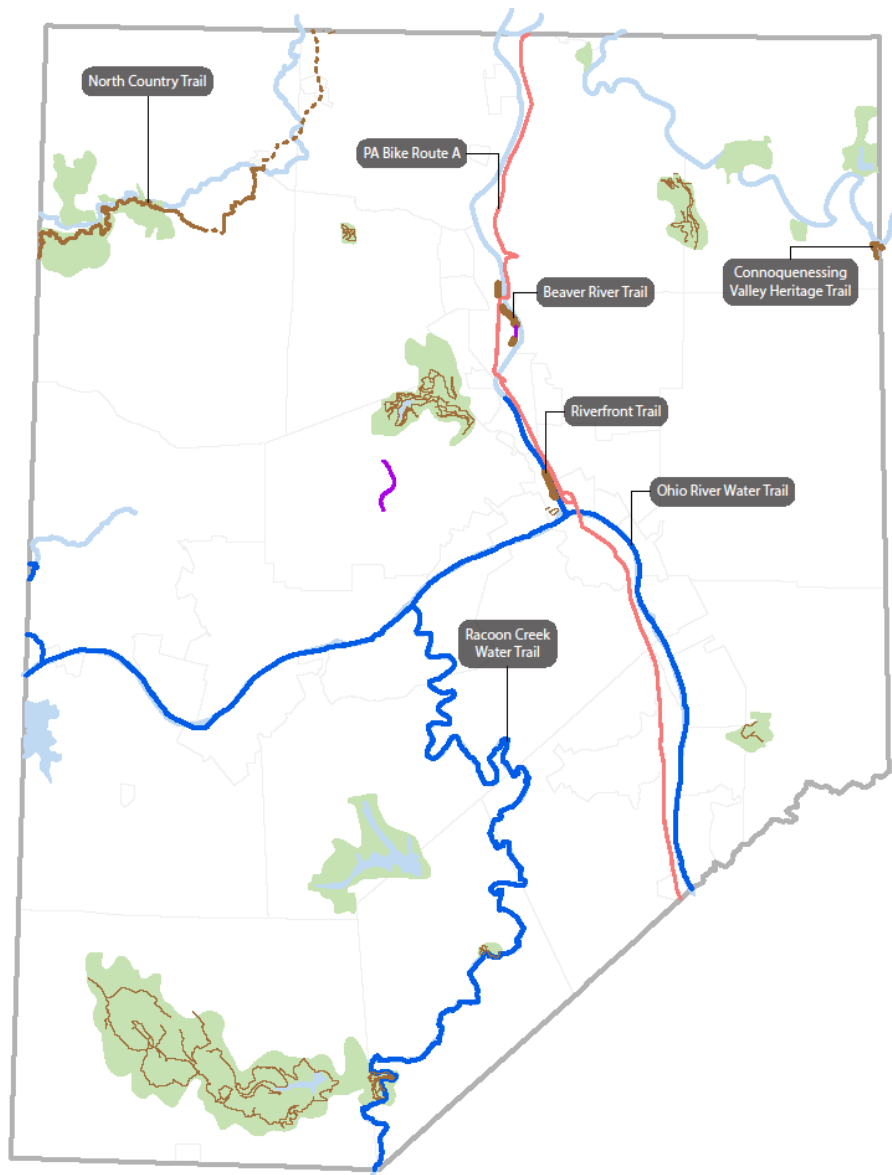


Beaver County Active Transportation Profile

REGIONAL ACTIVE TRANSPORTATION PLAN FOR SOUTHWESTERN PENNSYLVANIA



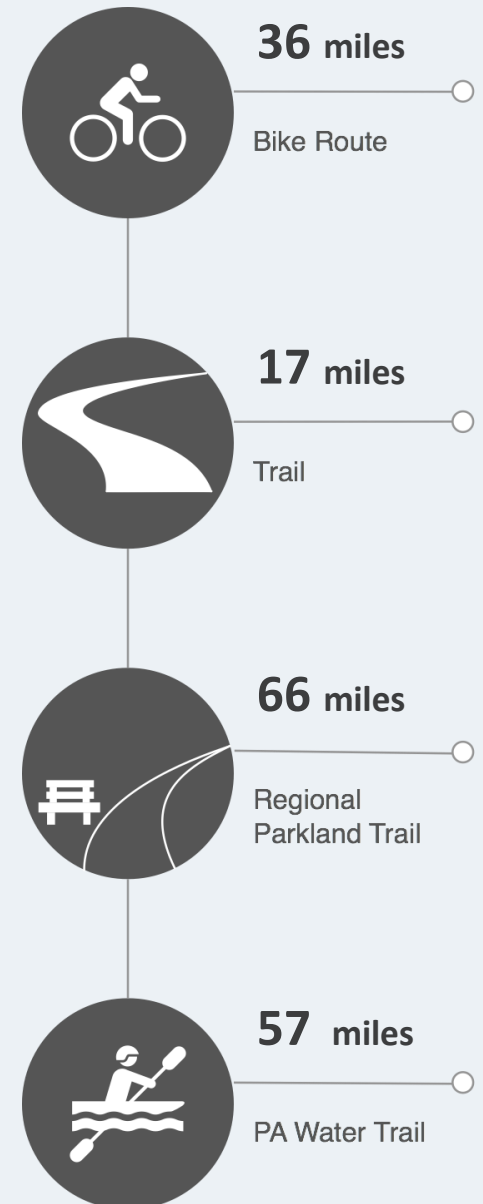
Trails + Bike Routes



- Parkland
- Parkland Trail
- Off Street Trail
- ... On Street Trail
- Local Bike Route
- PA Bike Route A
- Navigable Waterway
- Designated PA Water Trail

Other Water/Paddle Trail:

Navigable waterways that are not designated PA Water Trails also offer significant paddling opportunities and contribute to the health of a community. The **Connoquenessing Creek (Connie) Paddle Trail** empties into the Beaver River just north of the county line on the outskirts of Ellwood City, Lawrence County.

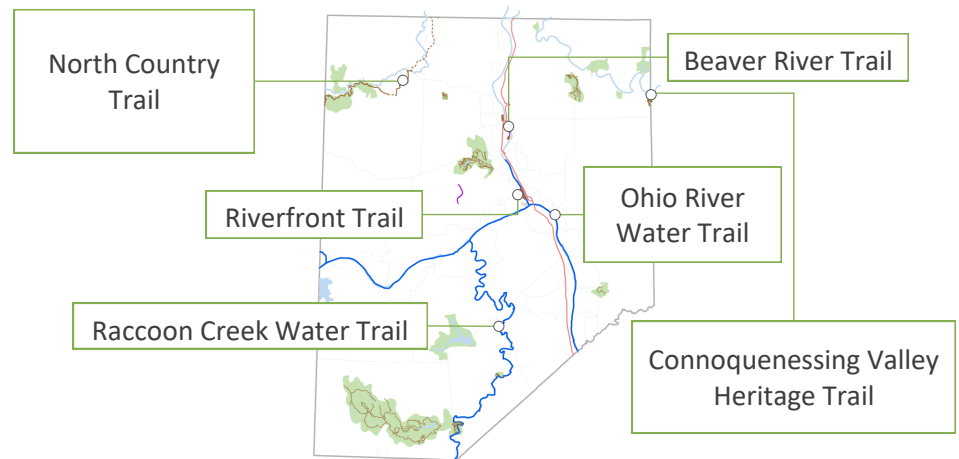


Facility Metrics

Facilities	2017
Miles of sidewalk (inventoried)	0
Miles of local on-road bike route	0
Miles of PA Bike Route A	33.8
Miles of protected bike lanes	0
Miles of bike lanes	2.6
Miles of sharrows	0
Miles of trail	83
<i>Miles of rail trail or separated paths</i>	16.7
<i>Miles of trail in regional parks & recreation areas</i>	66.3
Miles of navigable waterway	125.9
<i>Miles of designated PA Water Trails</i>	57.3

Support Facilities	2017
Bike Facilities	3
<i>Bike racks (inventoried)</i>	3
<i>Bike repair stations</i>	0
Trail parking and/or access points	46
Boat launches (source: PA Fish & Boat Commission + SPC: 8, with ownership not identified)	16
<i>State/Federal (PFBC, State Parks, PGC or COE)</i>	4
<i>Local government</i>	1
<i>Private ownership</i>	3

Source: SPC GIS; inventoried as of 12/31/17 unless otherwise noted



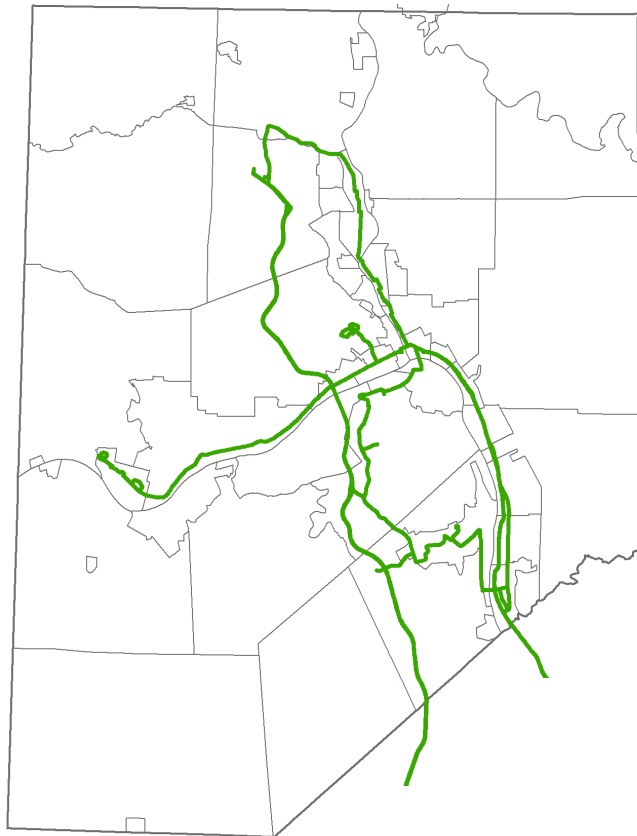
Land + PA Water Trail Highlights

Trail	Functional Classification	Total Miles	Miles in County
Beaver River Trail	Local	1.2	1.2
Connoquenessing Valley Heritage Trail	Neighborhood Collector	8.2	.5
North Country Trail	Regional Arterial	4,600	14
Riverfront Trail	Local	.6	.6
Ohio River Water Trail	Regional Arterial	69	29
Raccoon Creek Water Trail	Community Arterial	25	25

Trail Organizations

Organization	County Focus
Beaver River Rails to Trails Association	Beaver River Trail
Harmony Borough, Butler County	Connoquenessing Valley Heritage Trail
North Country Trail Association Wampum Chapter	North Country Trail
Ohio River Trail Council	Ohio River Water Trail, Riverfront Trail
Raccoon Creek Water Trail Association	Raccoon Creek Water Trail

County Transit



Fixed Transit Routes

Regular Service
(5 or more days / week)

Beaver County Transit Authority

System Type	Urban
Total Passengers	919,800
Senior Passengers	85,393
Current Fleet Size (motor bus)	23
Buses Equipped with Bike Racks	0

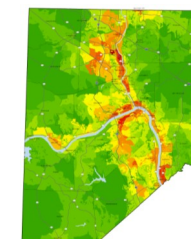
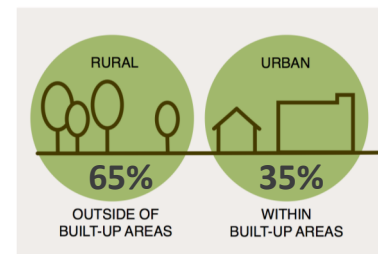
Community Transportation

Total Shared-Ride Trips	79,978
65 + Trips	30,895

Source: Pennsylvania Public Transportation Performance Report – Fiscal Year 2015-16

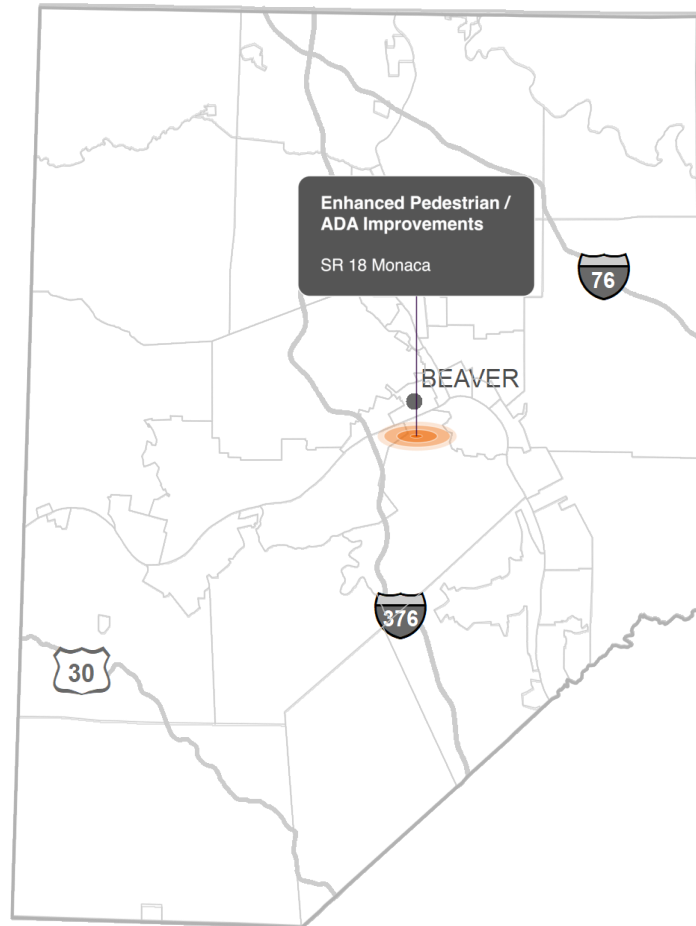
County Character

Land Use Development Patterns



High Density
Low Density

Infrastructure Projects



Description

"Complete street" improvements to 10-block segment of Monaca's main downtown corridor Pennsylvania Avenue, together with construction of 2.4 mile segment of Ohio River Greenway Trail on and along Pennsylvania Avenue.

PennDOT Connects



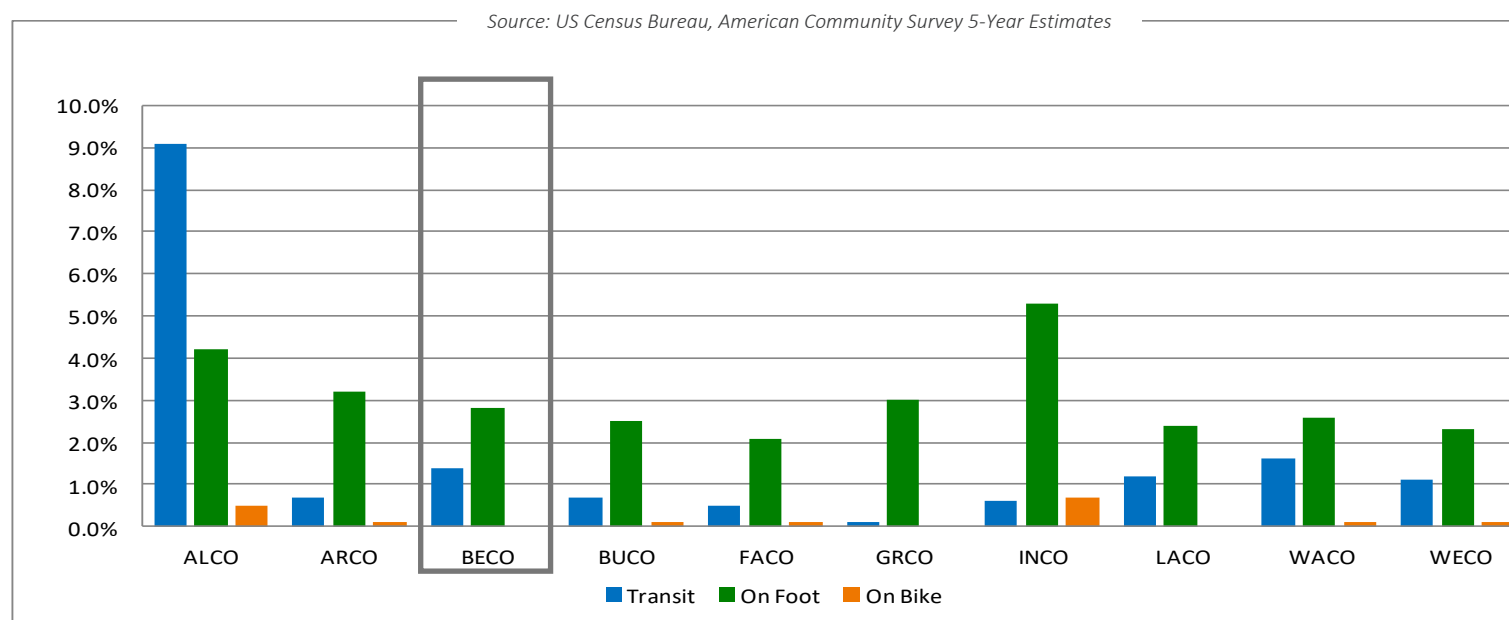
**PA18 from the Rochester
Monaca Bridge to Frankfort Road**

Accessibility

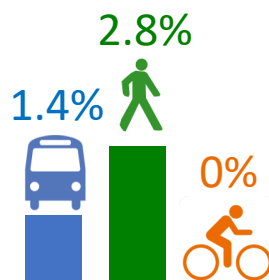
This roadway rehabilitation project will include milling and resurfacing with concrete patching and a potential bituminous overlay on Pennsylvania Avenue in the heart of Monaca. Additional improvements such as drainage upgrades, enhanced pedestrian crossings and ADA accessibility improvements will also be incorporated into the project. The movement of freight and truck traffic is also receiving specific attention in this corridor due to the development of Shell's ethane cracker facility.

Census Commute Mode Data

Census Commute Mode Comparison for SPC Counties: 2011-2015



2011-2015
Commute Mode
Beaver County



Beaver County, PA: 2006-2010 & 2011-2015

Means of Transportation to Work	2006-2010	2011-2015
Total Commuters	79,545	76,603
On bike	0.1%	0%
On foot	3.1%	2.8%
By transit	1.7%	1.4%

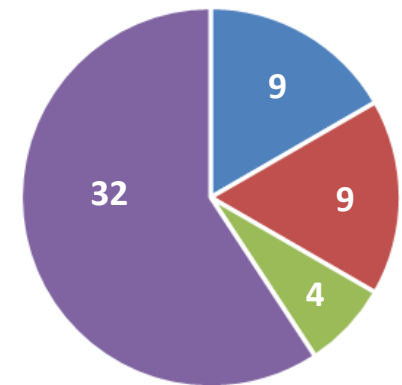
County Planning + Land Use Controls

County Plans & Land Use Controls	Document Title	Active Transportation
PLANS		
Comprehensive Plan	"Horizons: Planning for the 21st Century" - Beaver County Comprehensive Plan (2010)	✓
Open Space, Greenways & Trails Plan	Beaver County Comprehensive Recreation & Parks Plan (2003)	✓
	Beaver County Greenways & Trails Plan (2009)	✓
Bicycle/Pedestrian or AT Plan		
Other Plans or Studies related to AT	Proposed Route 65	✓
	Master Plan Bradys Run Park Master Site Plan (2008)	✓
LAND USE CONTROLS		
Subdivision and/or Land Development Ordinance (SALDO)		
Zoning Ordinance		
Official Map		

Municipal Planning + Land Use Controls

Of Beaver County's 54 municipalities, the following number of municipalities have:

- No Comprehensive Plan—No Land Use Controls
- No Comprehensive Plan—Land Use Control
- Comprehensive Plan—No Land Use Controls
- Comprehensive Plan—Land Use Controls



Municipal Planning for Biking + Walking

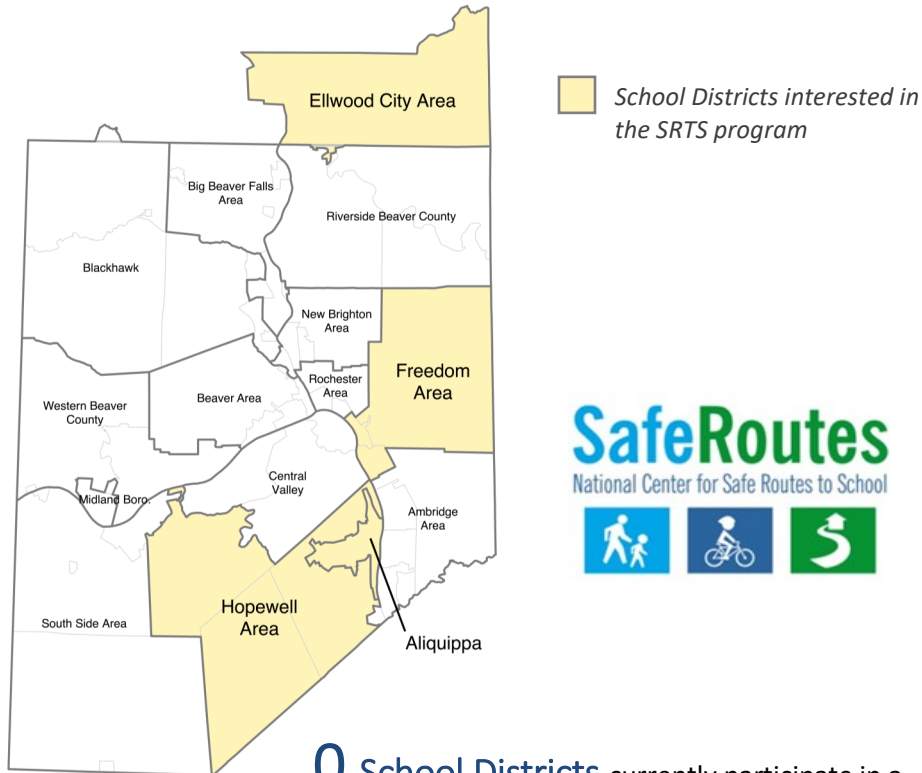
Brighton Township, Greenways & Trails Plan (2016)

This Plan proposes a network of connections between parks, schools, natural areas and various cultural and historic resources. These connections will help to preserve the township's natural systems and its unique character and quality of life, while providing valuable recreational and active transportation opportunities for local residents. Findings from the township's **Bicycle / Pedestrian Network Feasibility Study (2002)** were incorporated into the greenway plan.

Current Programs, Policies + Designations

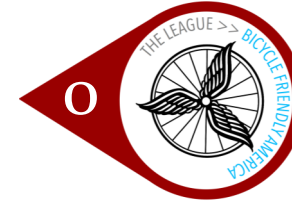
Safe Routes to Schools

In spring 2017, SPC administered a Safe Routes to School (SRTS) Program survey to identify the level of participation and/or interest in the SRTS program. Based on the responses that were received:

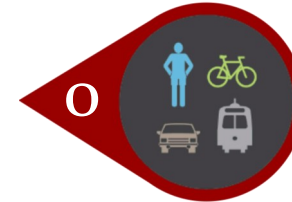


0 School Districts currently participate in a Safe Routes to School (SRTS) program.

4 School Districts are interested in learning more about funding opportunities for creating a Safe Routes to School (SRTS) program: Ellwood City Area, Freedom Area and Hopewell Area.



Bicycle Friendly Communities



Complete Streets Policy



Trail Towns
• Darlington



River Towns



Walk Friendly Communities



WalkWorks